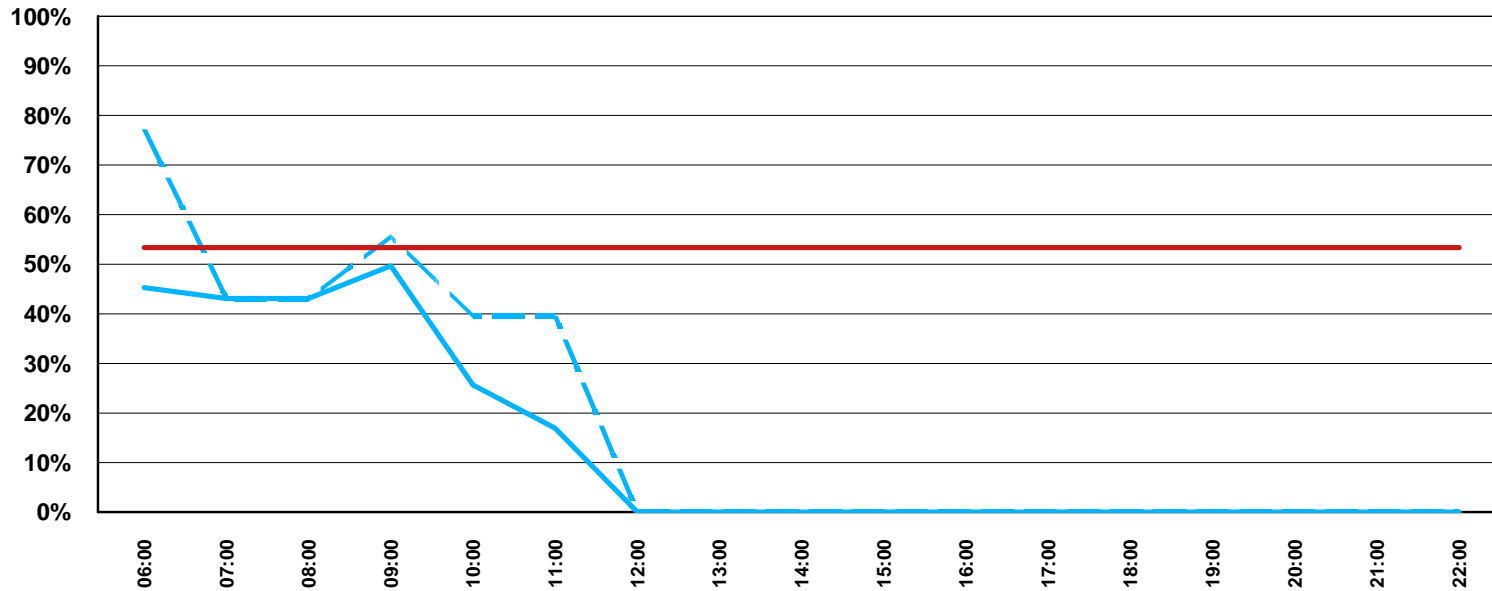


ADELAIDE INTERNATIONAL TERMINAL

Weekly Arriving Seat Capacity Utilisation

W09 November 2009 - March 2010 (February Week)



Updated: April 2009

— Avg Week - - - Max Week — Close to Full



ADELAIDE INTERNATIONAL TERMINAL

Weekly Departing Seat Capacity Utilisation

W09 November 2009 - March 2010 (February Week)



Updated: April 2009

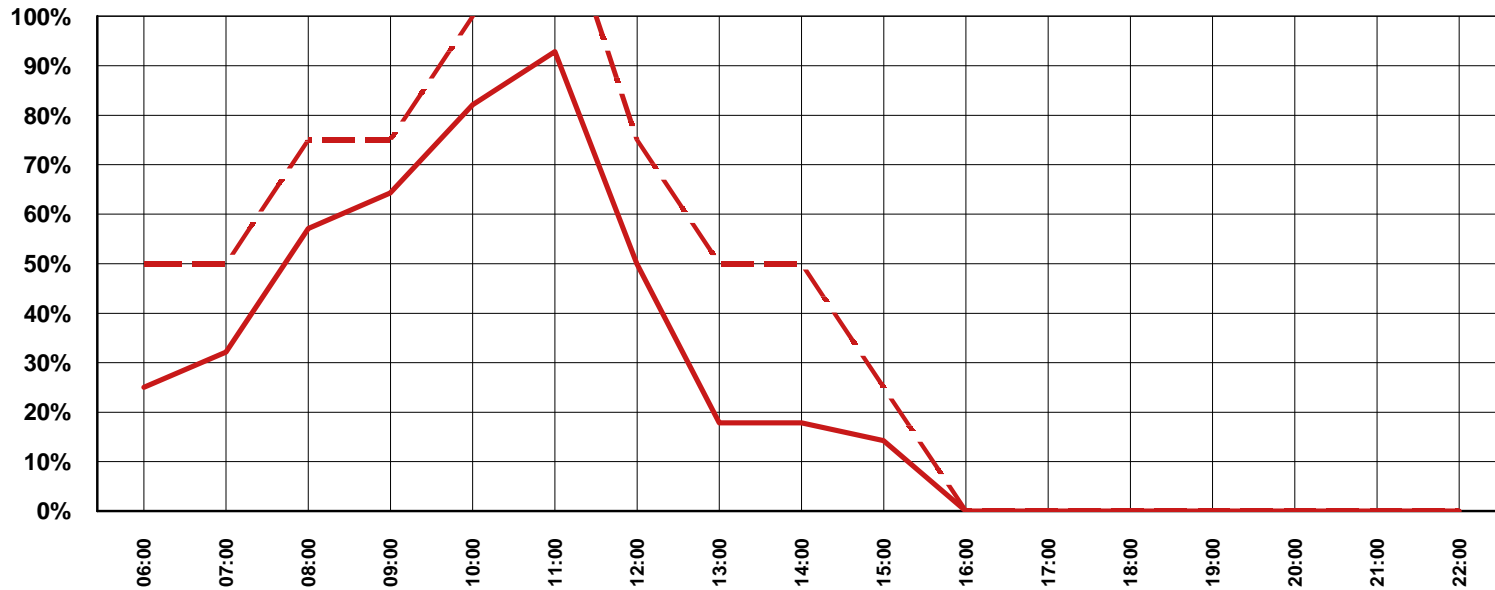
— Avg Week - - - Max Week — Close to Full



ADELAIDE INTERNATIONAL TERMINAL

Apron Capacity Utilisation

W09 November 2009 - March 2010 (February Week)



Updated: April 2009

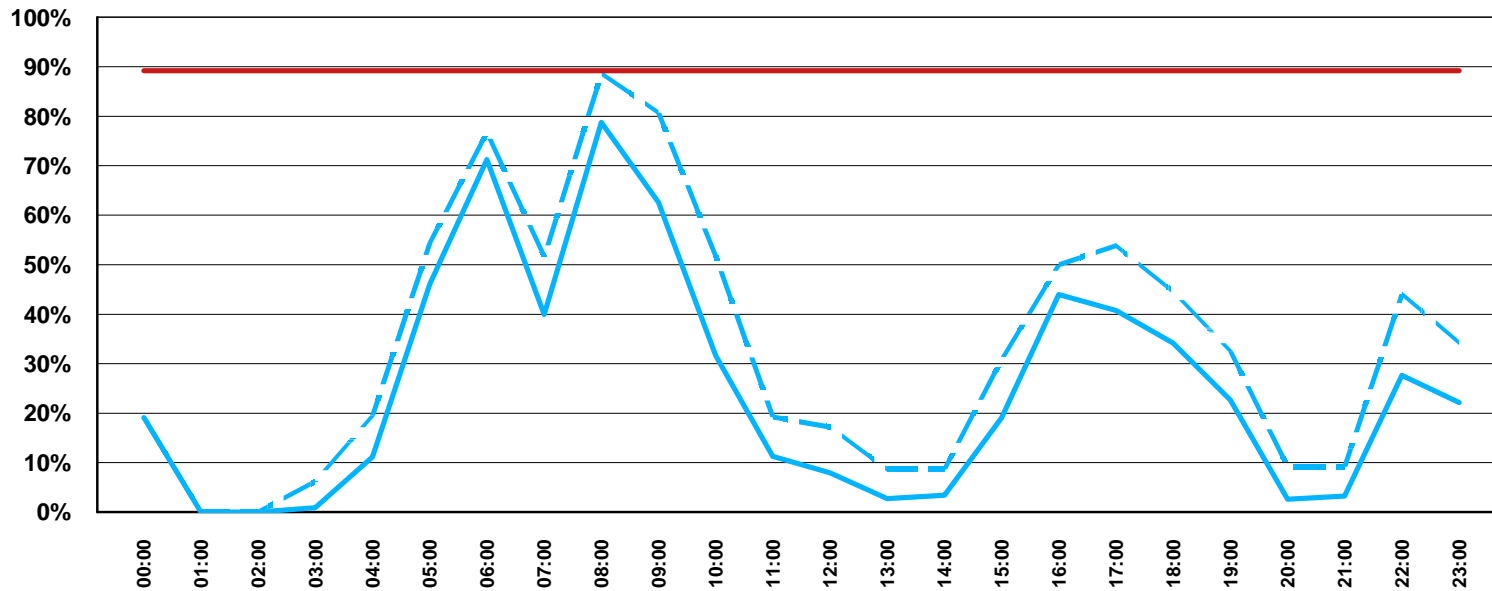
— Avg Week - - - Max Week — Close to Full



BRISBANE INTERNATIONAL TERMINAL

Weekly Arriving Seat Capacity Utilisation

W09 November 2009 - March 2010 (February Week)



Updated: April 2009

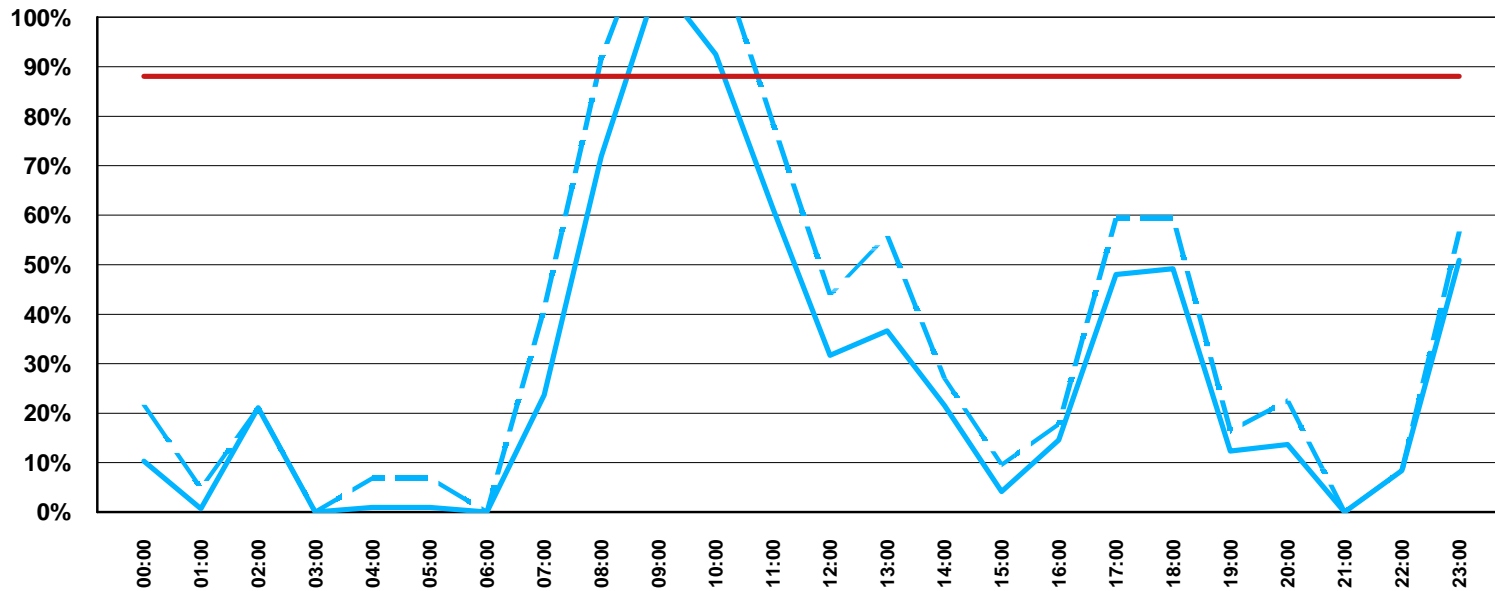
— Avg Week - - - Max Week — Close to Full



BRISBANE INTERNATIONAL TERMINAL

Weekly Departing Seat Capacity Utilisation

W09 November 2009 - March 2010 (February Week)



Updated: April 2009

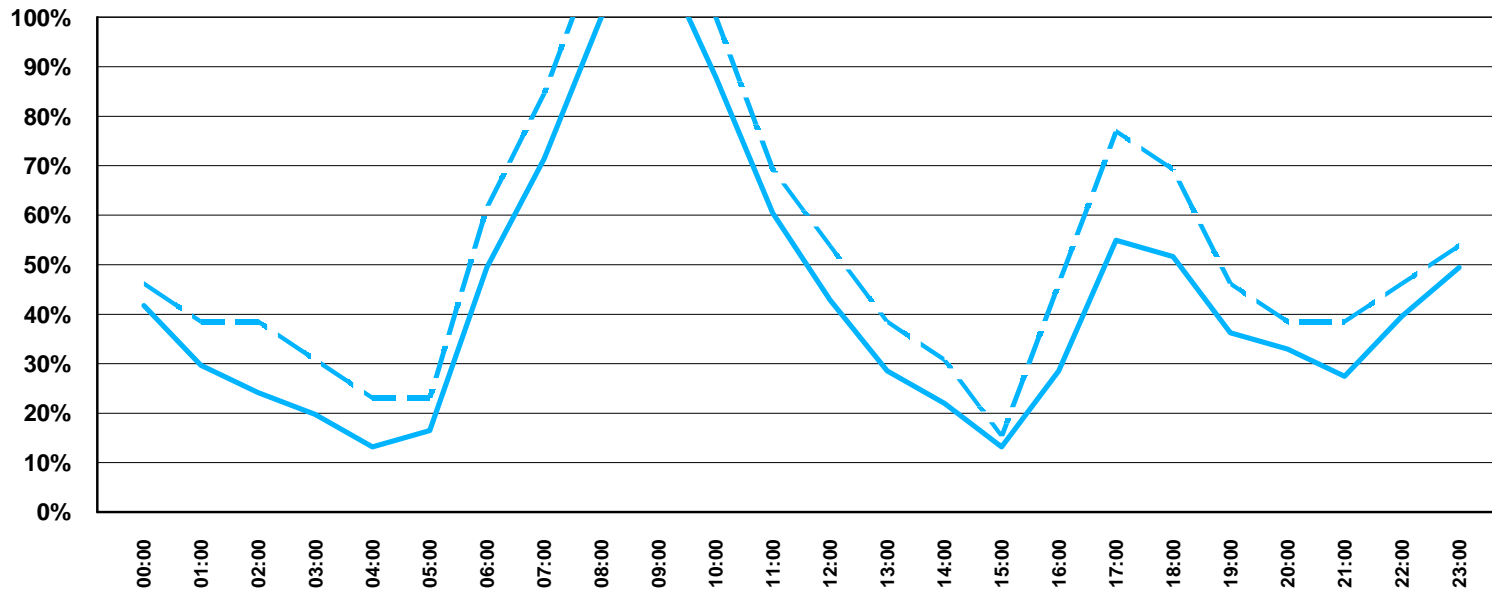
— Avg Week - - - Max Week — Close to Full



BRISBANE INTERNATIONAL TERMINAL

Apron Capacity Utilisation

W09 November 2009 - March 2010 (February Week)



Updated: April 2009

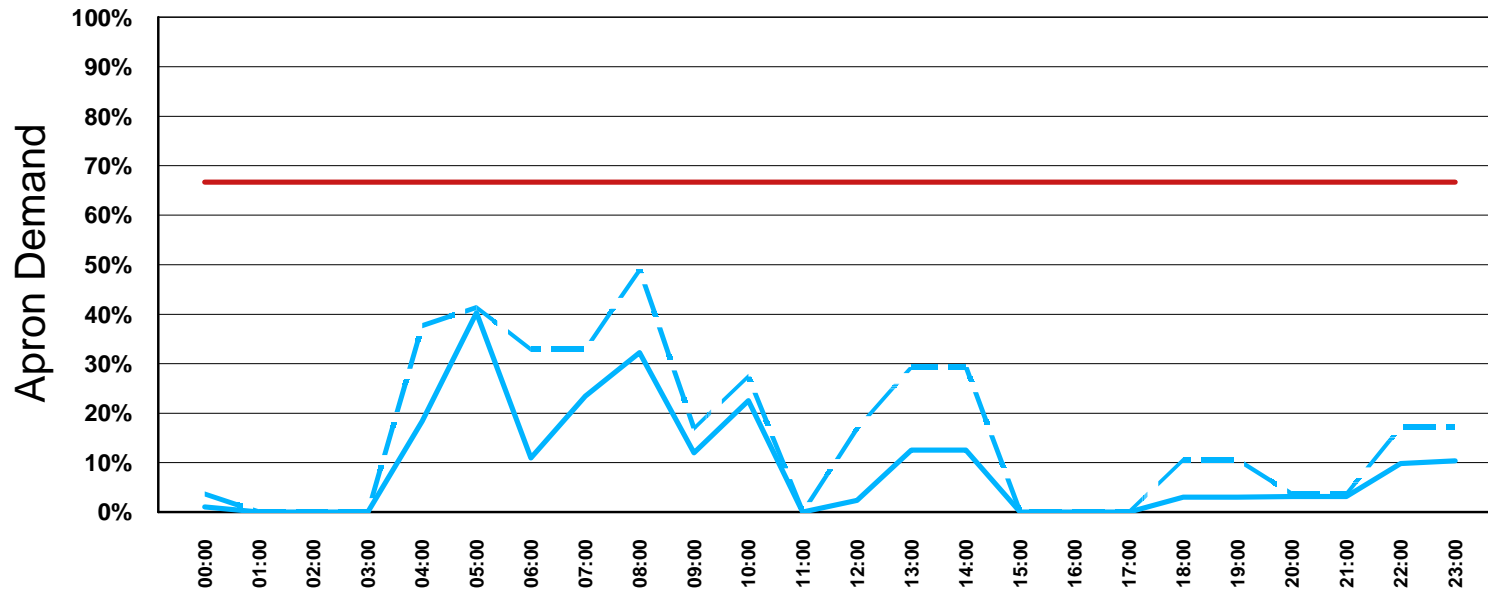
— Avg Week - - - Max Week — Close to Full



CAIRNS INTERNATIONAL TERMINAL

Weekly Arriving Seat Capacity Utilisation

W09 November 2009 - March 2010 (February Week)



Updated: April 2009

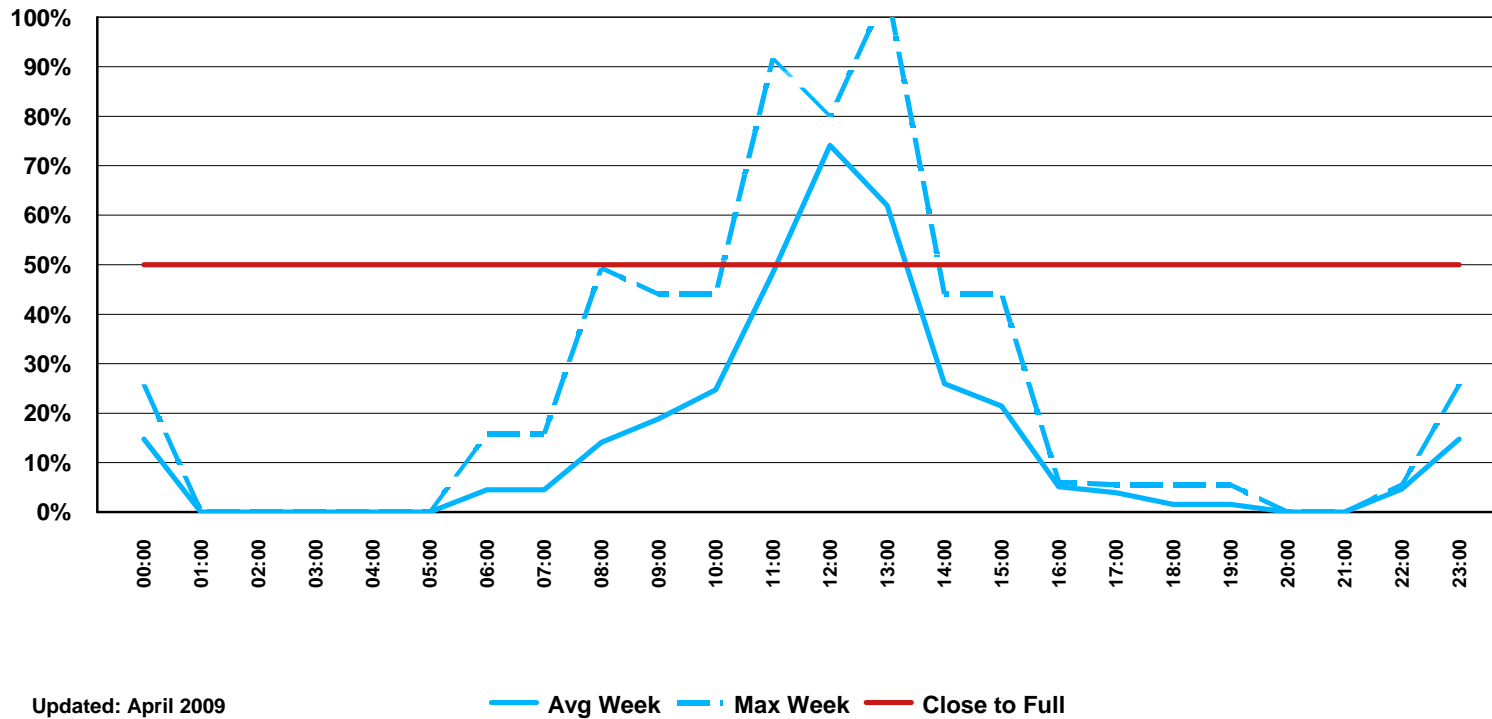
— Avg Week - - - Max Week — Close to Full



CAIRNS INTERNATIONAL TERMINAL

Weekly Departing Seat Capacity Utilisation

W09 November 2009 - March 2010 (February Week)



CAIRNS INTERNATIONAL TERMINAL

Apron Capacity Utilisation

W09 November 2009 - March 2010 (February Week)



Updated: April 2009

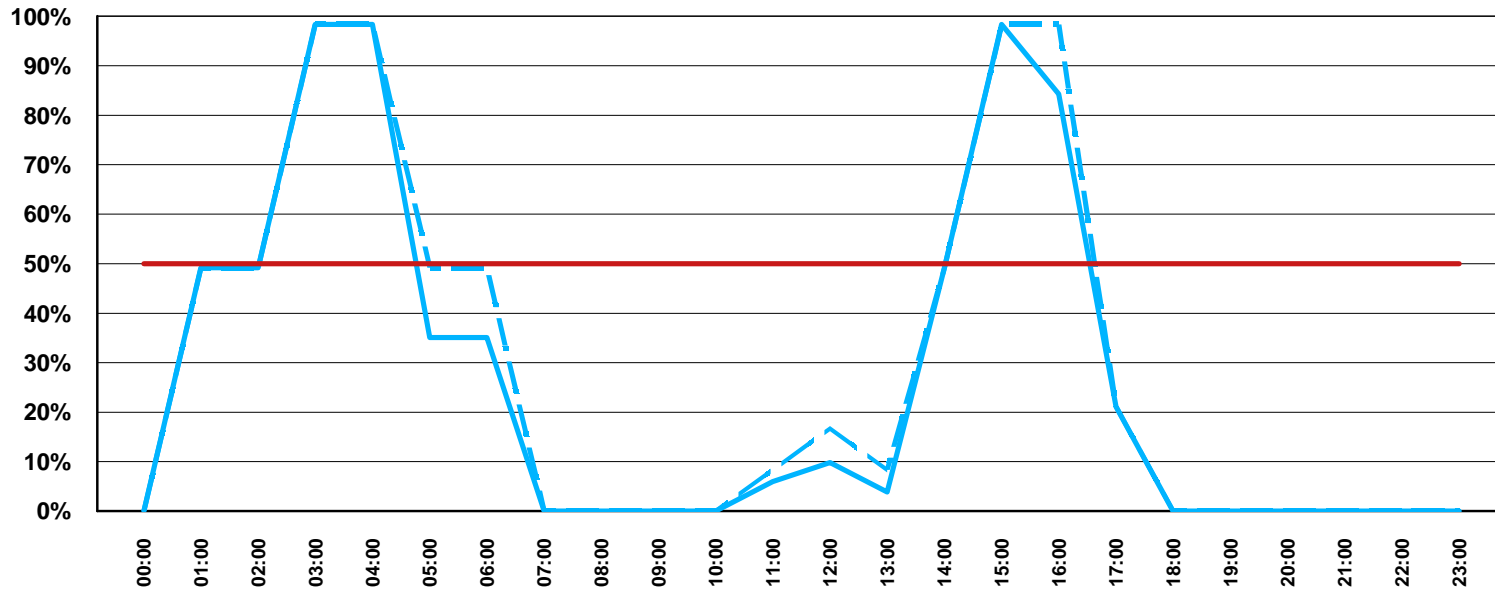
— Avg Week - - - Max Week — Close to Full



DARWIN INTERNATIONAL TERMINAL

Weekly Arriving Seat Capacity Utilisation

W09 November 2009 - March 2010(February Week)



Updated: April 2009

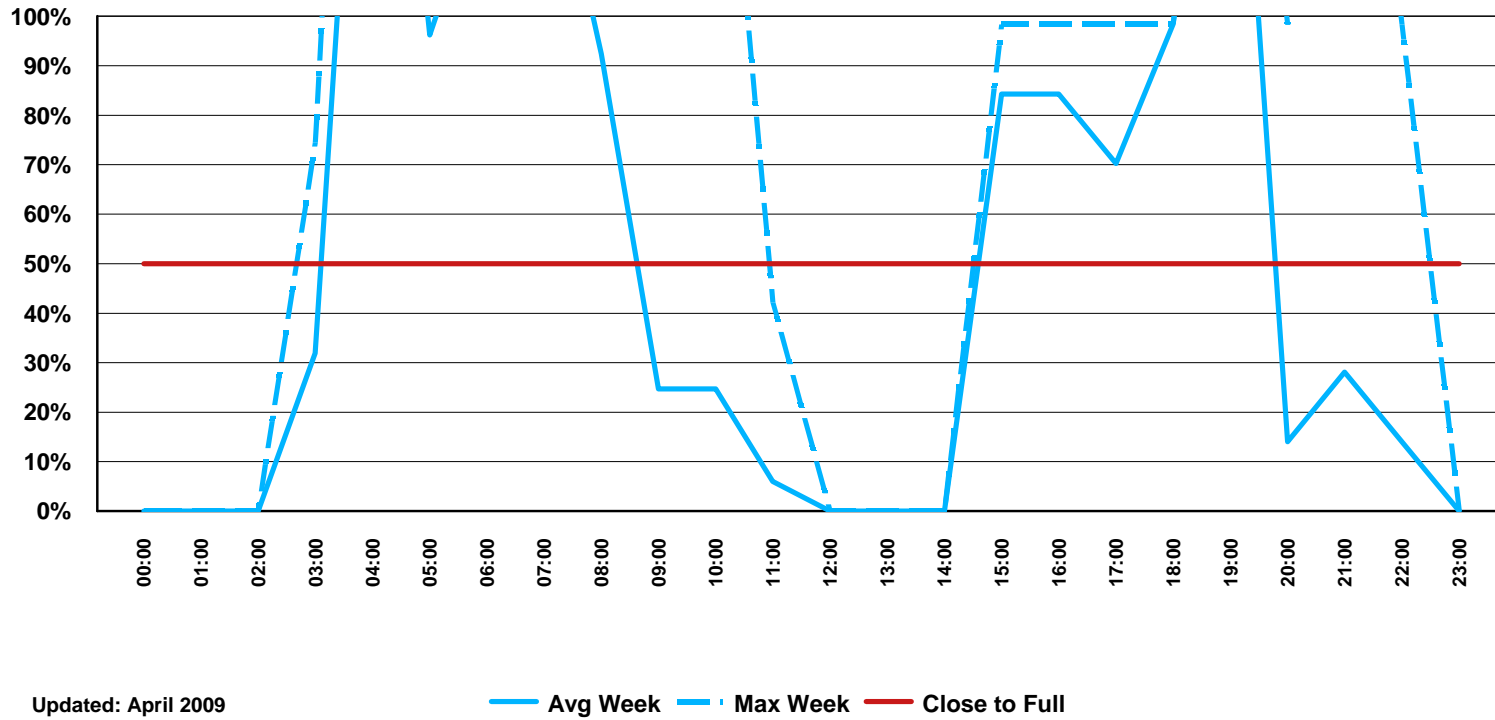
— Avg Week - - - Max Week — Close to Full



DARWIN INTERNATIONAL TERMINAL

Weekly Departing Seat Capacity Utilisation

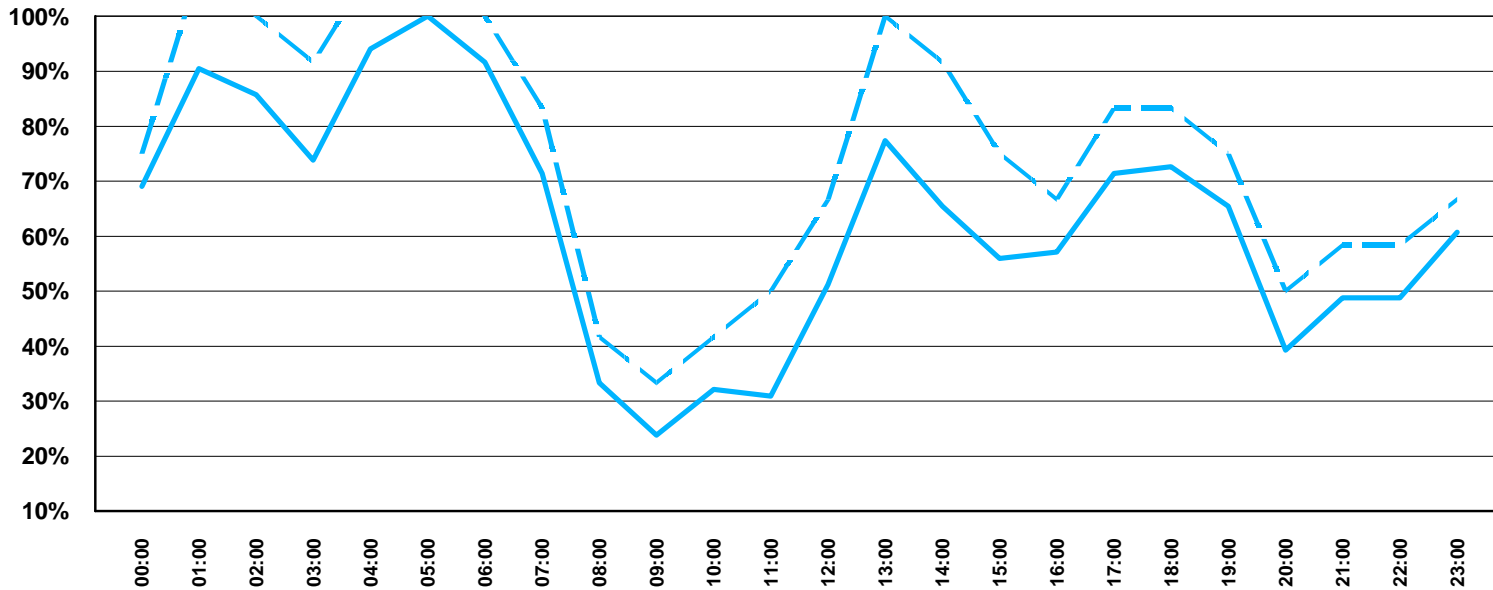
W09 November 2009 - March 2010 (February Week)



DARWIN INTERNATIONAL TERMINAL

Apron Capacity Utilisation

W09 November 2009 - March 2010 (February Week)



Updated: April 2009

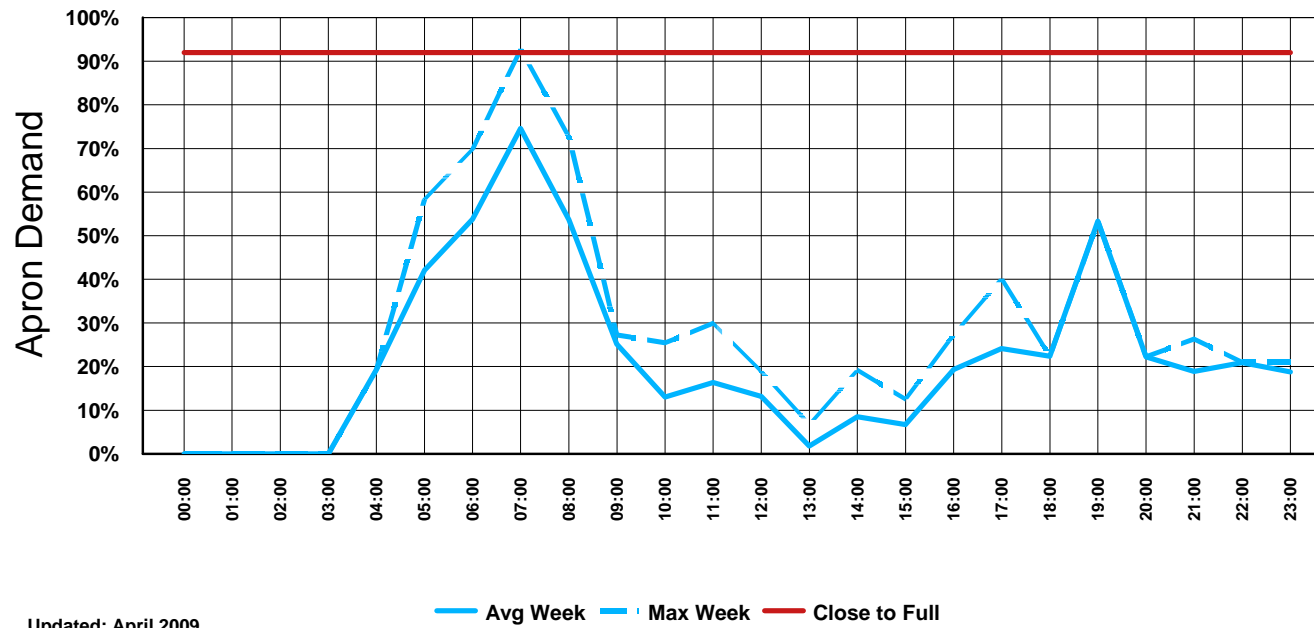
— Avg Week - - - Max Week — Close to Full



MELBOURNE INTERNATIONAL TERMINAL

Weekly Arrival Seat Capacity Utilisation

W09 November 2009 - March 2010 (February Week)

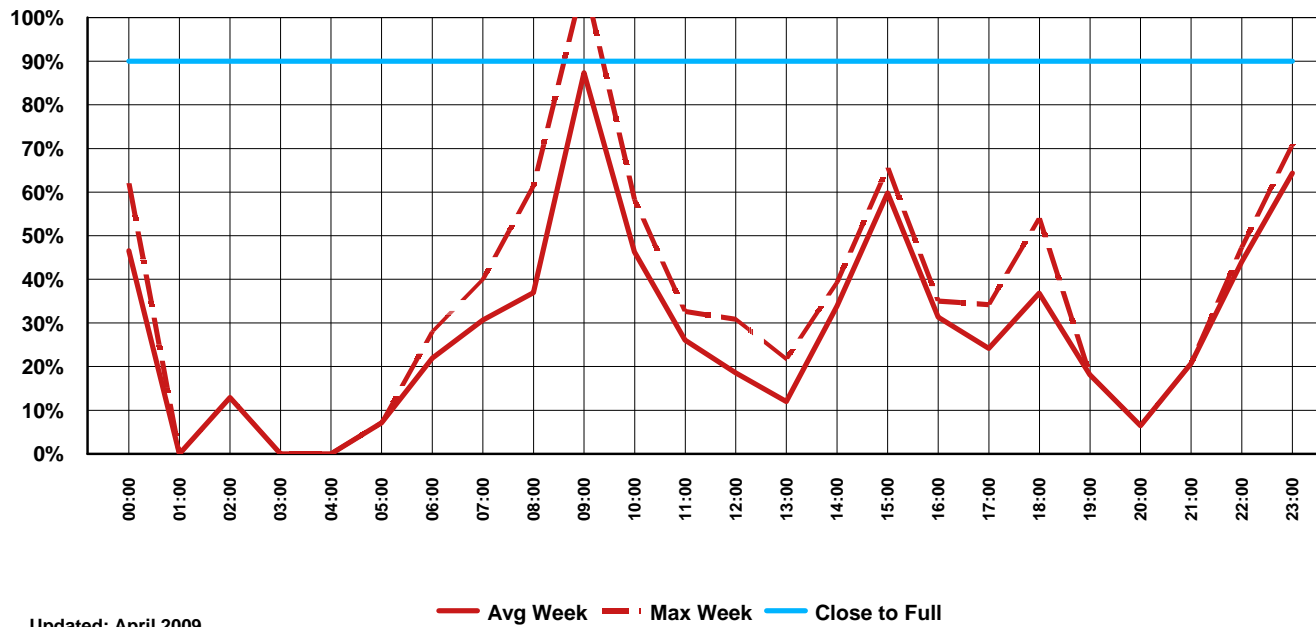


Updated: April 2009



MELBOURNE INTERNATIONAL TERMINAL

Weekly Departure Seat Capacity Utilisation W09 November 2009 - March 2010 (February Week)



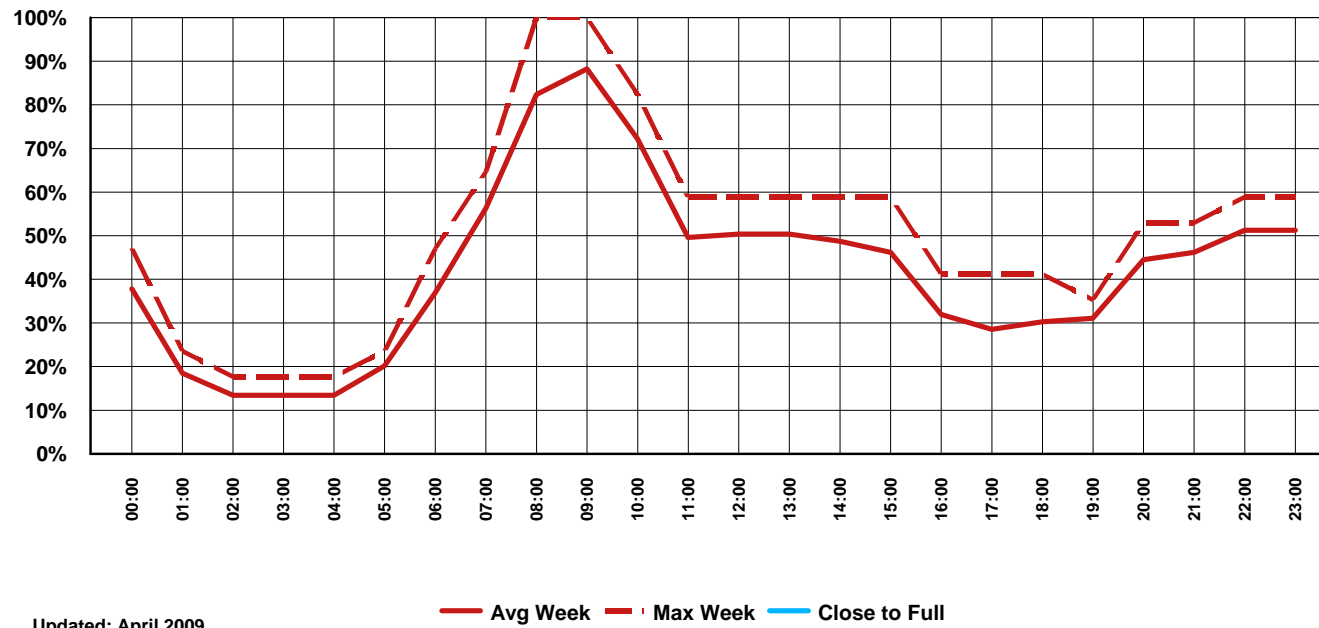
Updated: April 2009



MELBOURNE INTERNATIONAL TERMINAL

ApronCapacity Utilisation

W09 November 2009 - March 2010 (February Week)



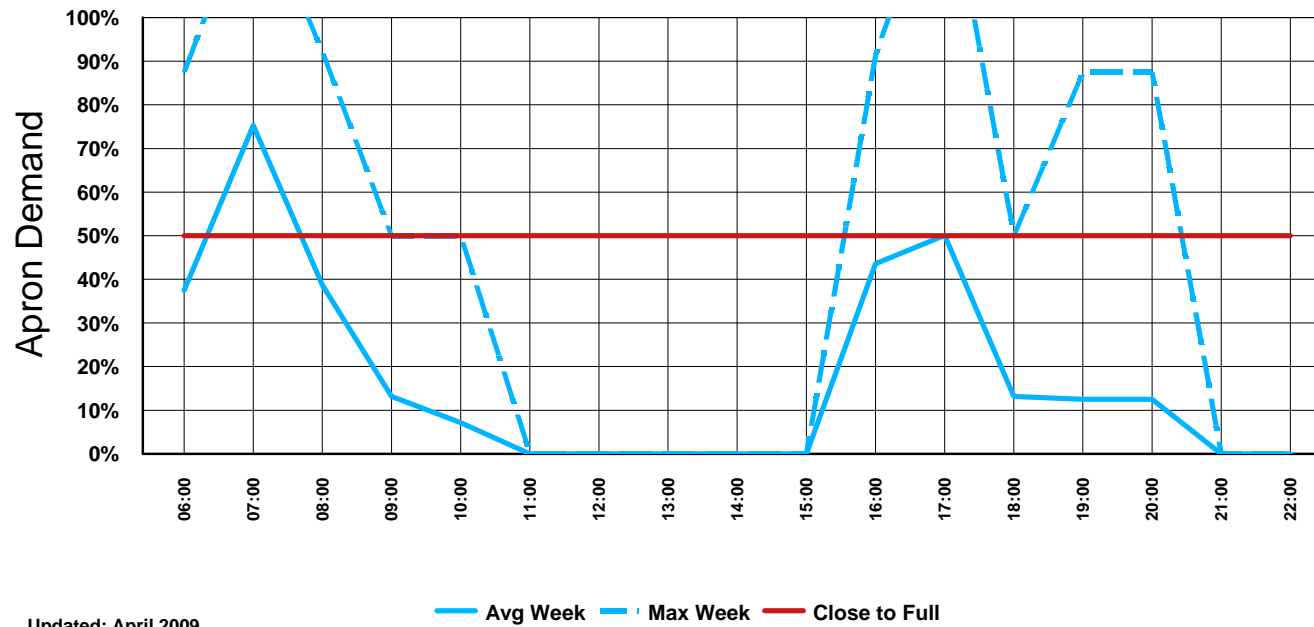
Updated: April 2009



GOLDCOAST INTERNATIONAL TERMINAL

Weekly Arrival Seat Capacity Utilisation

W09 November 2009 - March 2010 (February Week)



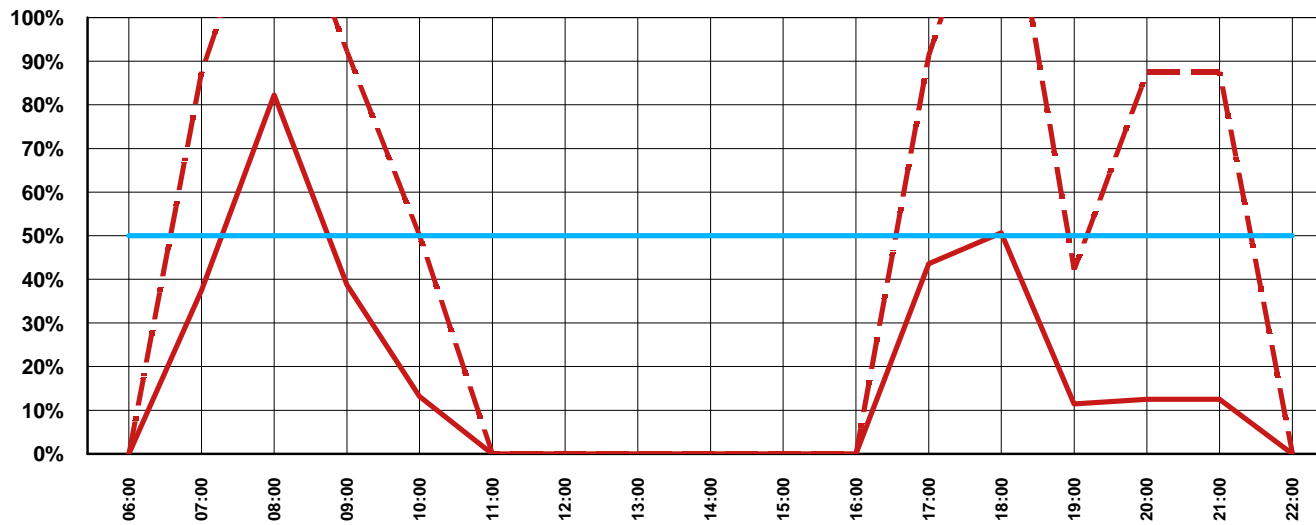
Updated: April 2009



GOLDCOAST INTERNATIONAL TERMINAL

Weekly Departure Seat Capacity Utilisation

W09 November 2009 - March 2010 (February Week)



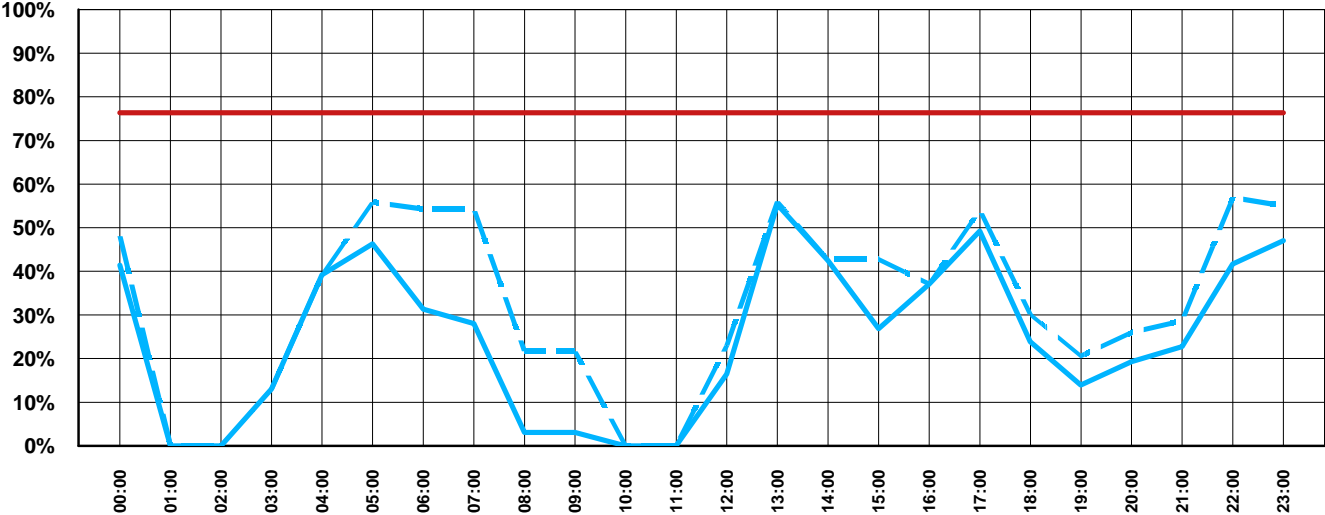
Updated: April 2009

— Avg Week - - - Max Week — Close to Full



PERTH INTERNATIONAL TERMINAL

Weekly Arrival Seat Capacity Utilisation W09 November 2009 - March 2010 (February Week)



Updated: April 2009

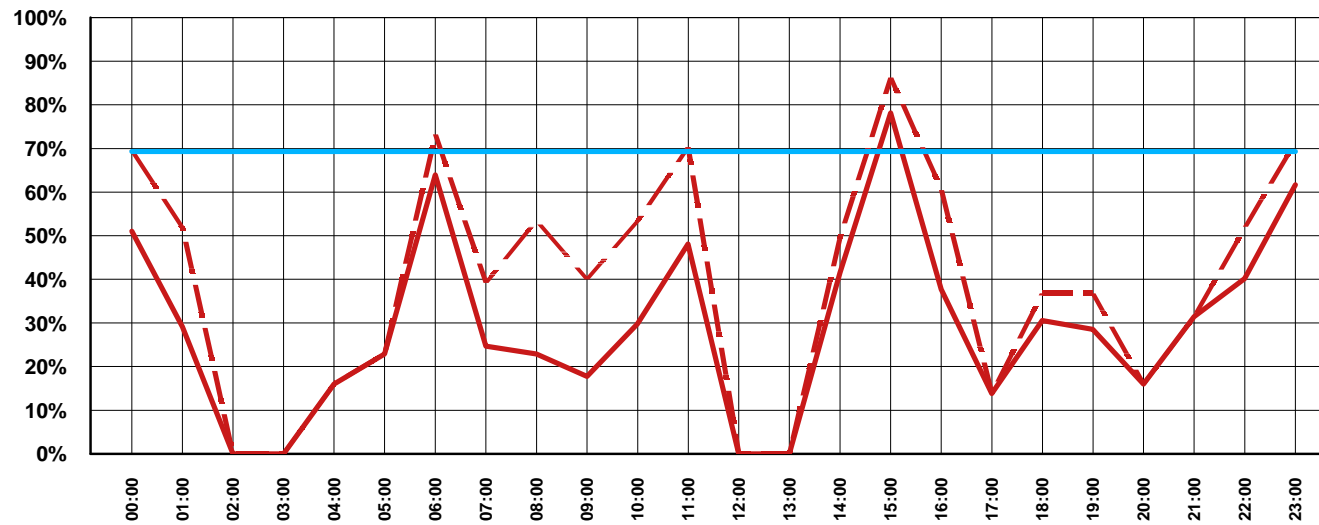
— Avg Week - - - Max Week — Close to Full



PERTH INTERNATIONAL TERMINAL

Weekly Departure Seat Capacity Utilisation

W09 November 2009 - March 2010 (February Week)



Updated: April 2009

— Avg Week - - - Max Week — Close to Full



PERTH INTERNATIONAL TERMINAL

Apron Capacity Utilisation

W09 November 2009 - March 2010 (February Week)



Updated: April 2009

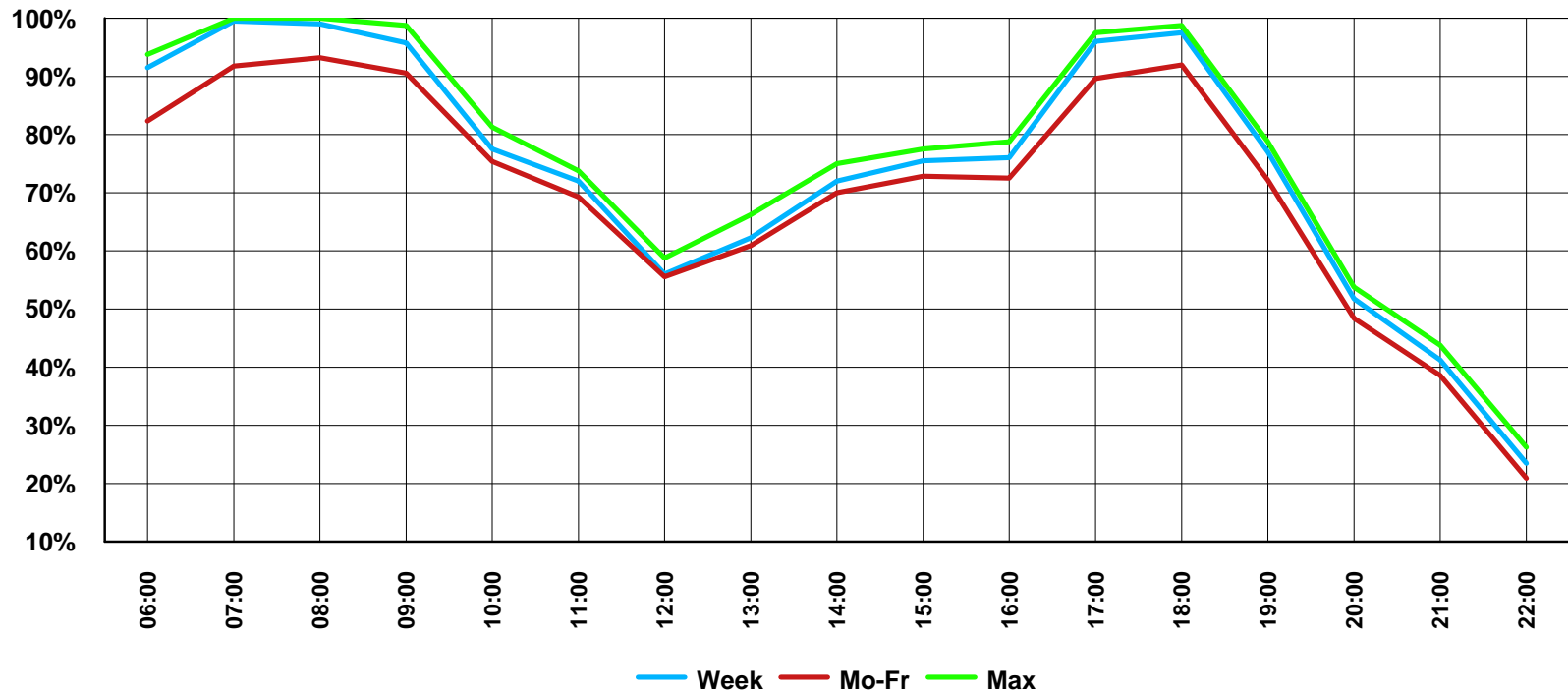
— Avg Week - - - Max Week — Close to Full



SYDNEY INTERNATIONAL AIRPORT

Weekly Runway Slot Utilisation

W09 November 2009 - March 2010 (February Week)



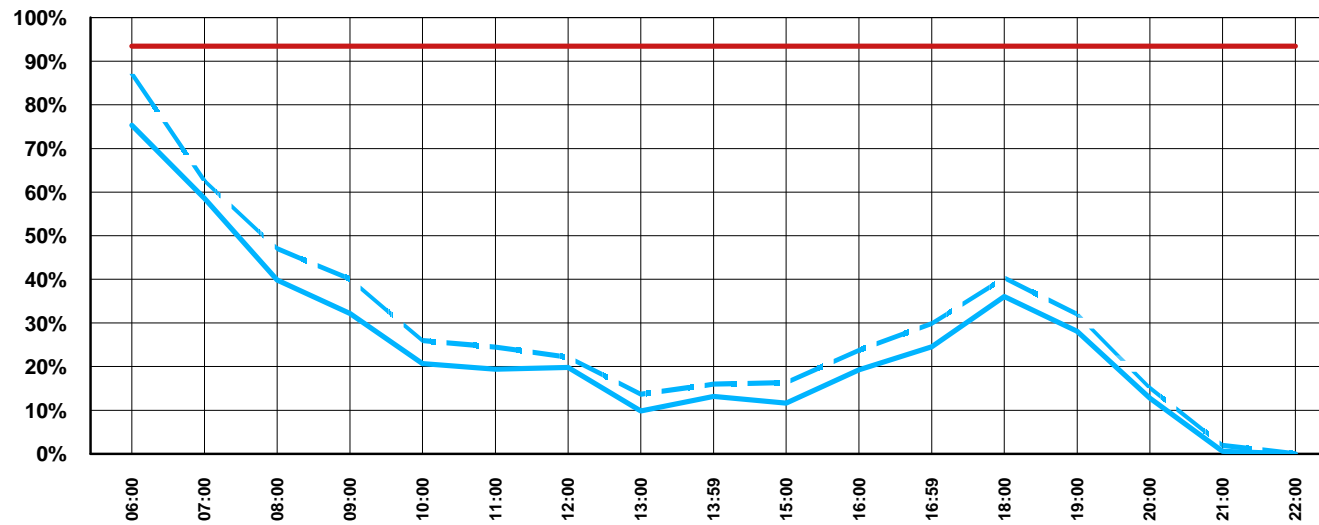
Updated: April 2009



SYDNEY INTERNATIONAL TERMINAL

Weekly Arrival Seat Capacity Utilisation

W09 November 2009 - March 2010 (February Week)



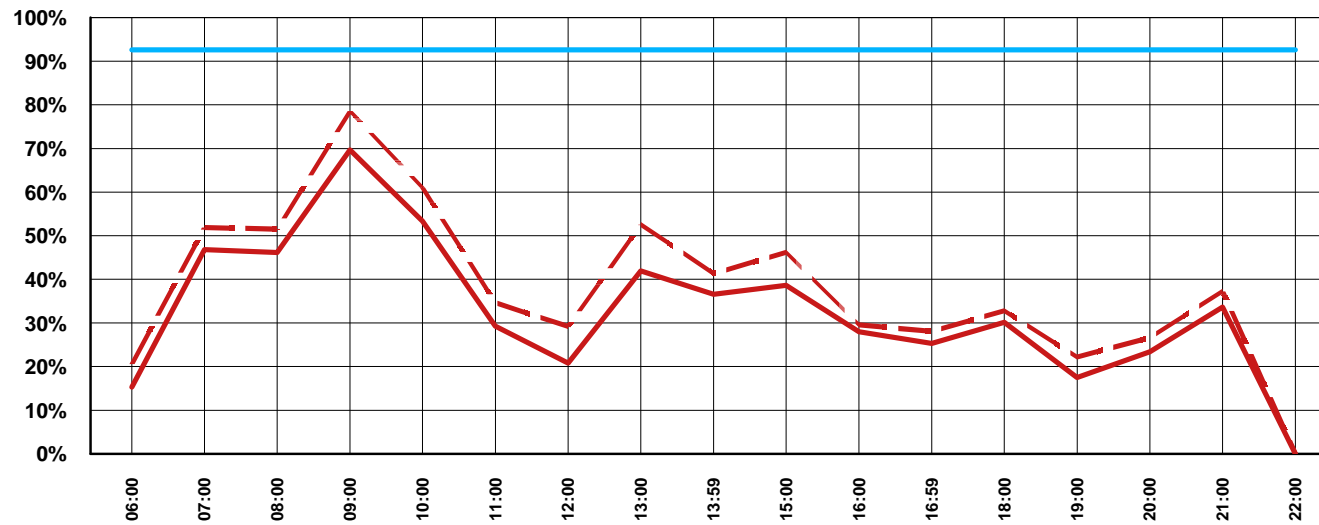
Updated: April 2009

— Avg Week A - - - Max Week A — Close to Full



SYDNEY INTERNATIONAL TERMINAL

Weekly Departure Seat Capacity Utilisation W09 November 2009 - March 2010 (February Week)



Updated: April 2009

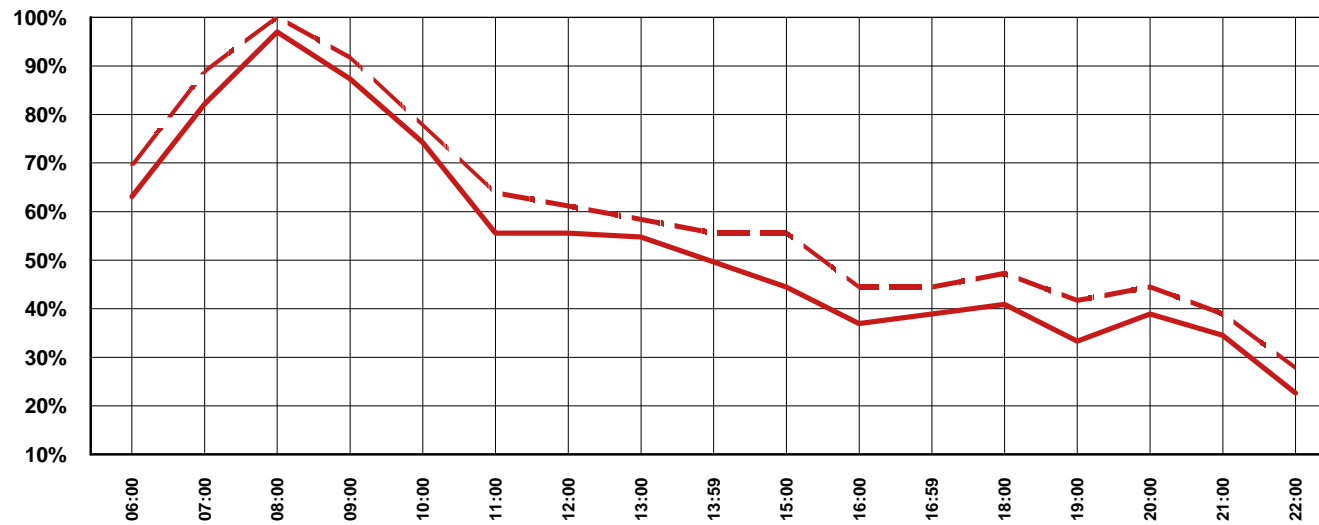
— Avg Week - - - Max Week — Close to Full



SYDNEY INTERNATIONAL TERMINAL

Apron T1 Capacity Utilisation

W09 November 2009 - March 2010 (February Week)



Updated: April 2009

— Avg Week - - - Max Week — Close to Full

