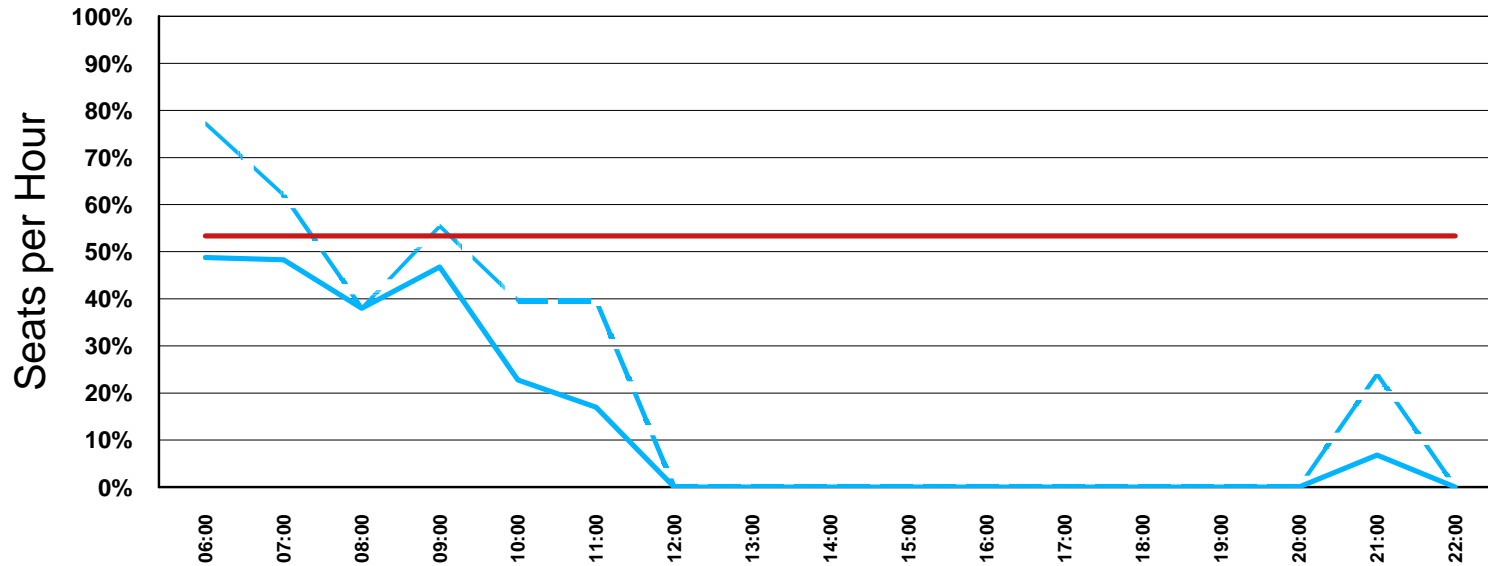


ADELAIDE INTERNATIONAL TERMINAL

Weekly Arriving Seat Capacity Utilisation

S10 April - October 2010 (August Week)



Curfew 23:00 - 06:05
Updated: November 2009

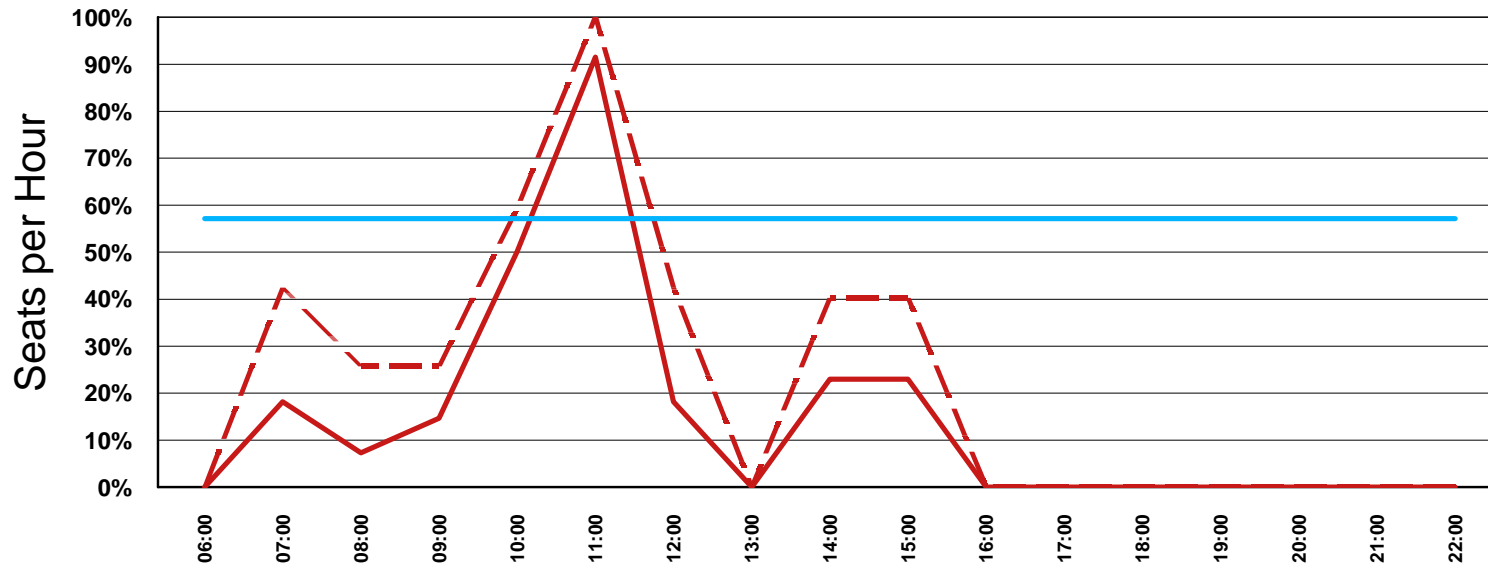
— Avg Week - - - Max Week — Close to Full



ADELAIDE INTERNATIONAL TERMINAL

Weekly Departing Seat Capacity Utilisation

S10 April - October 2010 (August Week)



Curfew 23:00 - 06:05
 Updated: November 2009

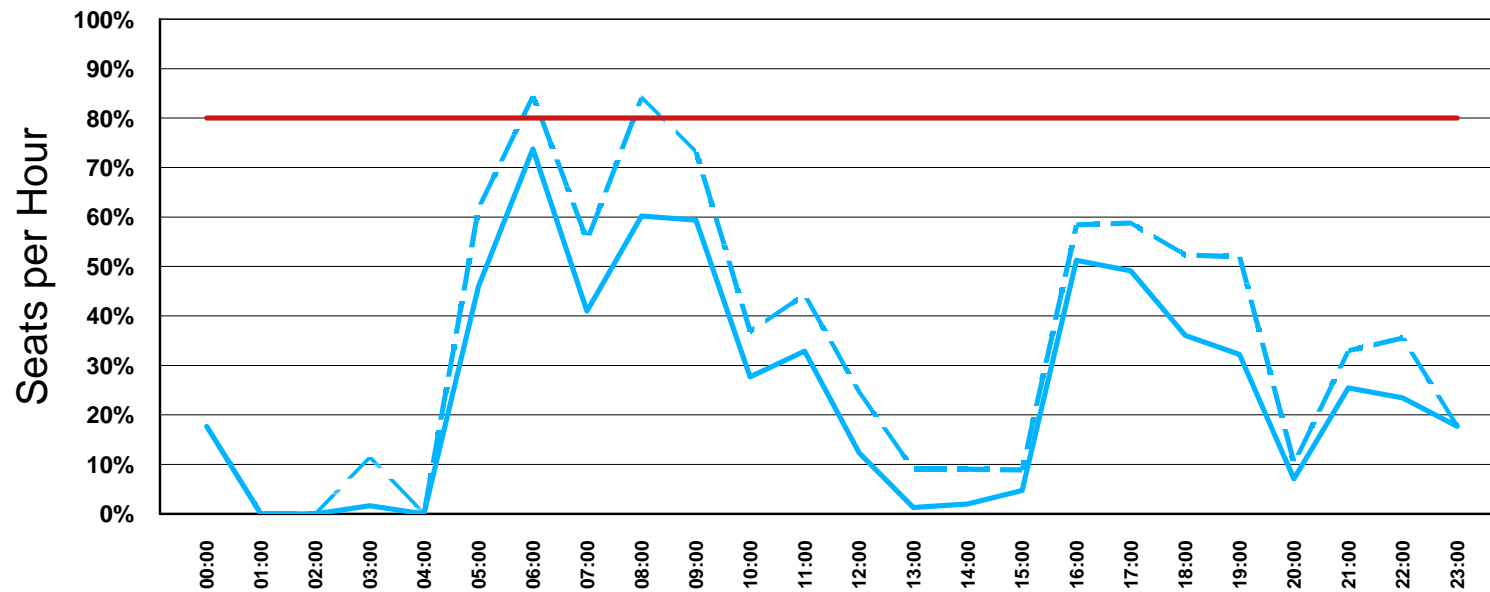
— Avg Week - - Max Week — Close to Full



BRISBANE INTERNATIONAL TERMINAL

Weekly Arriving Seat Capacity Utilisation

S10 April - October 2010 (August Week)



Updated: November 2009

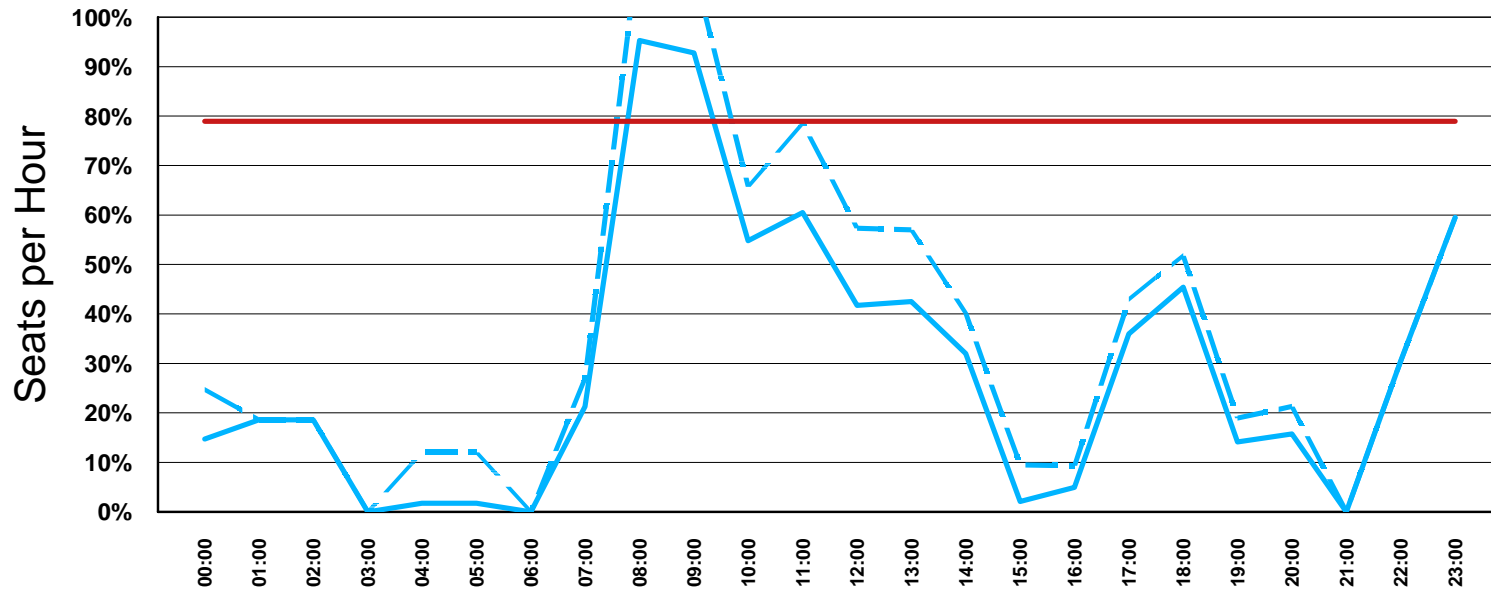
— Avg Week - - Max Week — Close to Full



BRISBANE INTERNATIONAL TERMINAL

Weekly Departing Seat Capacity Utilisation

S10 April - October 2010 (August Week)



Updated: November 2009

— Avg Week - - Max Week — Close to Full



CAIRNS INTERNATIONAL TERMINAL

Weekly Arriving Seat Capacity Utilisation

S10 April - October 2010 (August Week)



Updated: November 2009

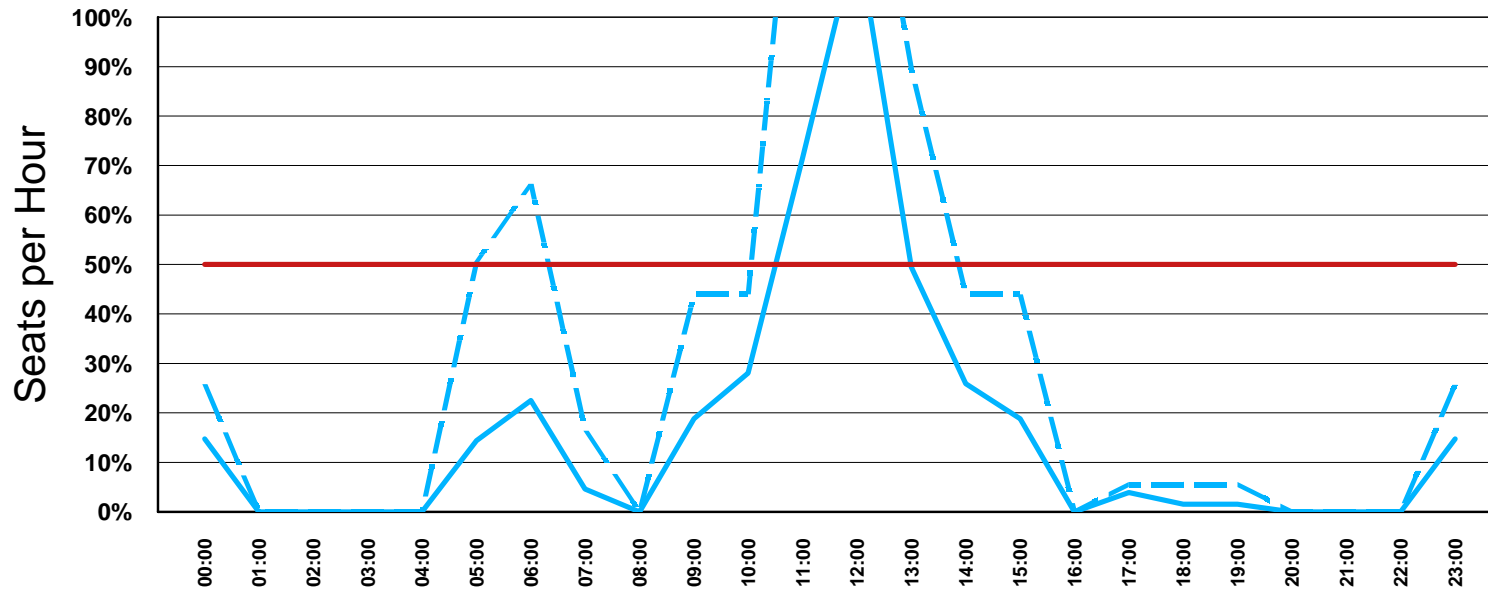
— Avg Week - - - Max Week — Close to Full



CAIRNS INTERNATIONAL TERMINAL

Weekly Departing Seat Capacity Utilisation

S10 April - October 2010 (August Week)



Updated: November 2009

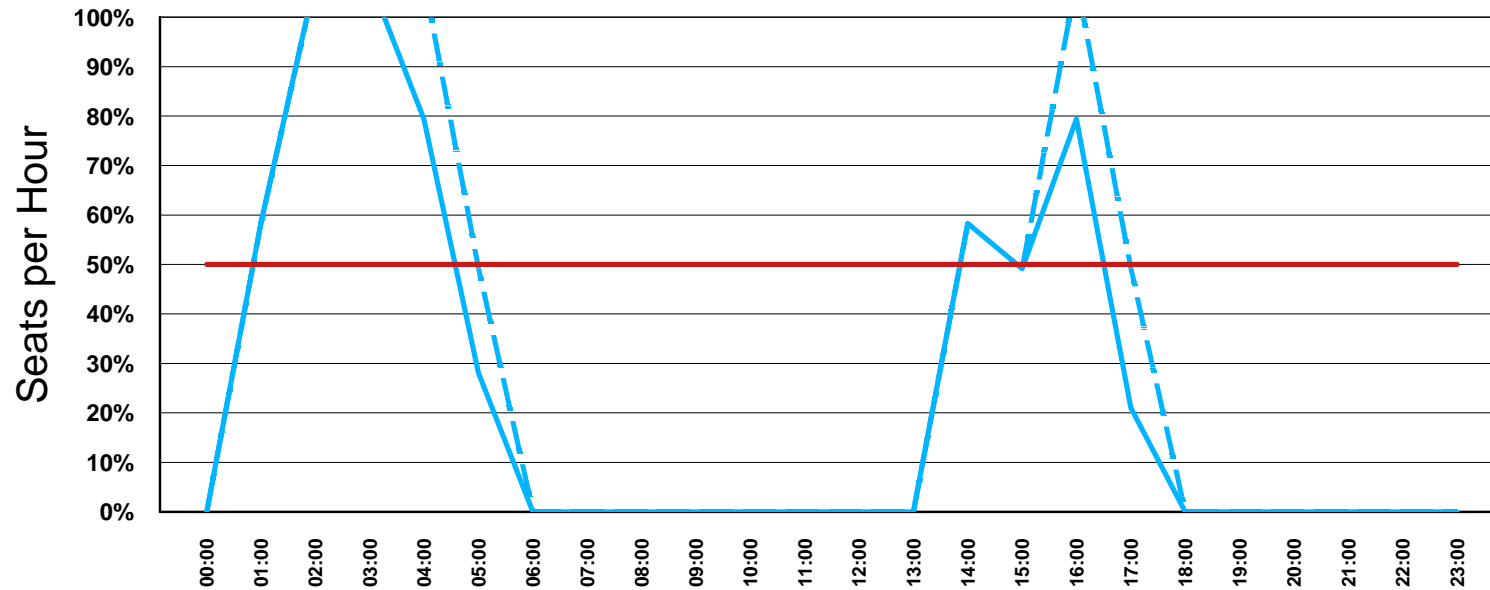
— Avg Week - - - Max Week — Close to Full



DARWIN INTERNATIONAL TERMINAL

Weekly Arriving Seat Capacity Utilisation

S10 April - October 2010 (August Week)



Updated: November 2009

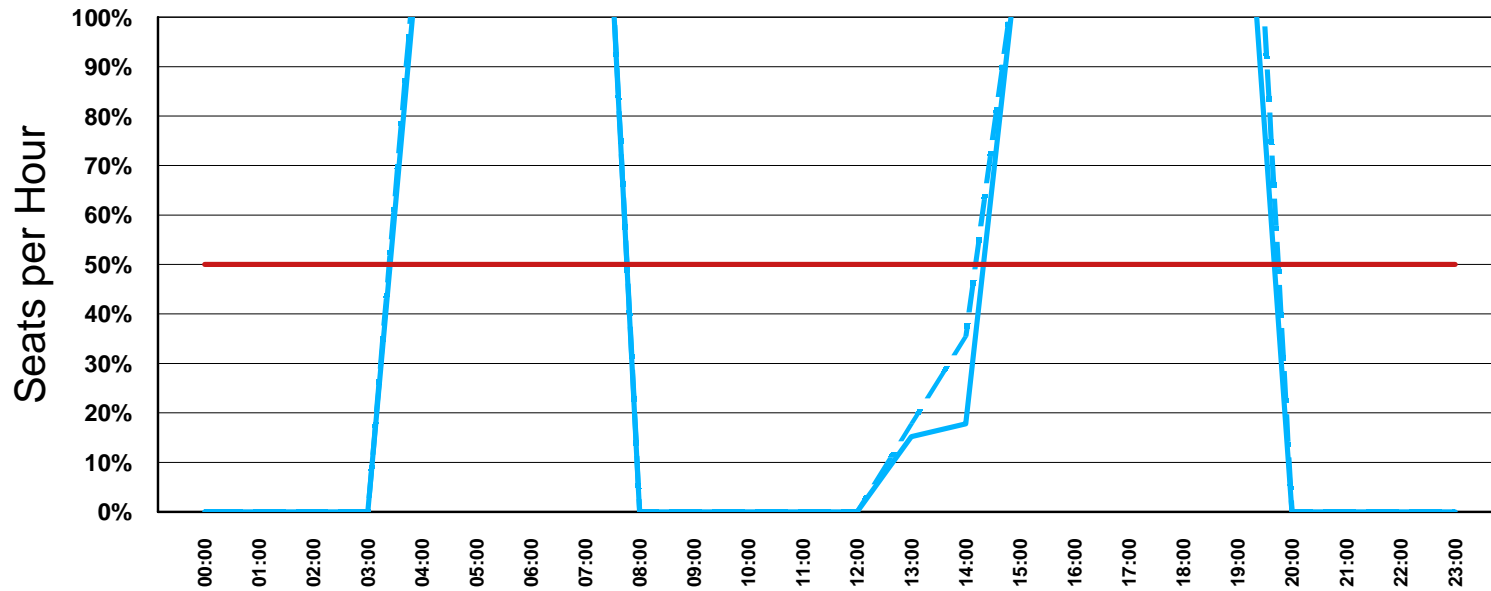
— Avg Week - - Max Week — Close to Full



DARWIN INTERNATIONAL TERMINAL

Weekly Departing Seat Capacity Utilisation

S10 April - October 2010 (August Week)



Updated: November 2009

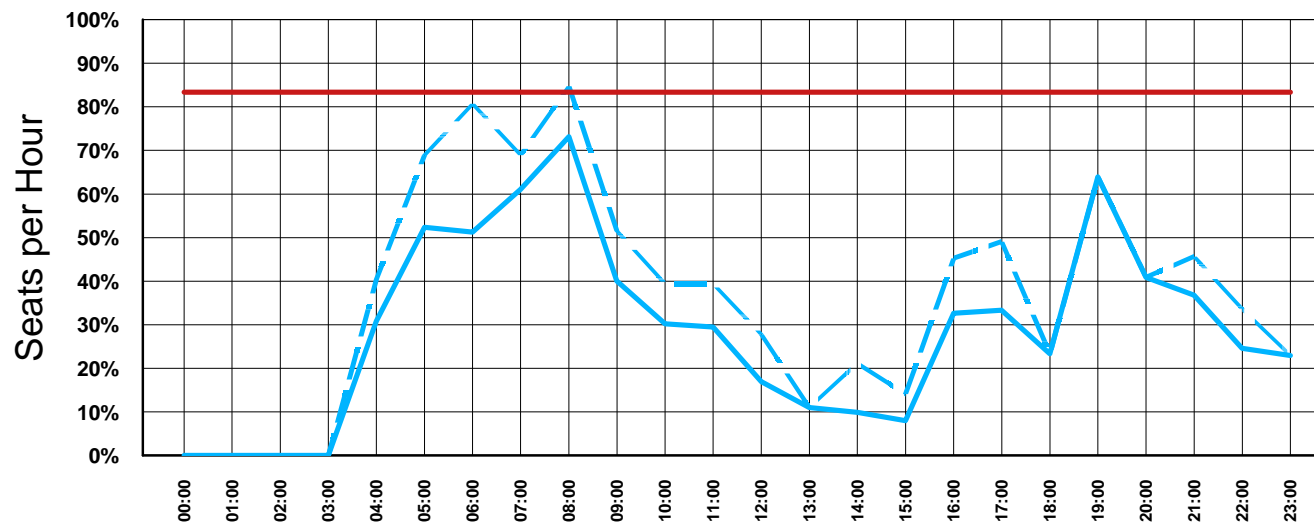
— Avg Week - - Max Week — Close to Full



MELBOURNE INTERNATIONAL TERMINAL

Weekly Arrival Seat Capacity Utilisation

S10 April - October 2010 (August Week)



Updated: November 2009

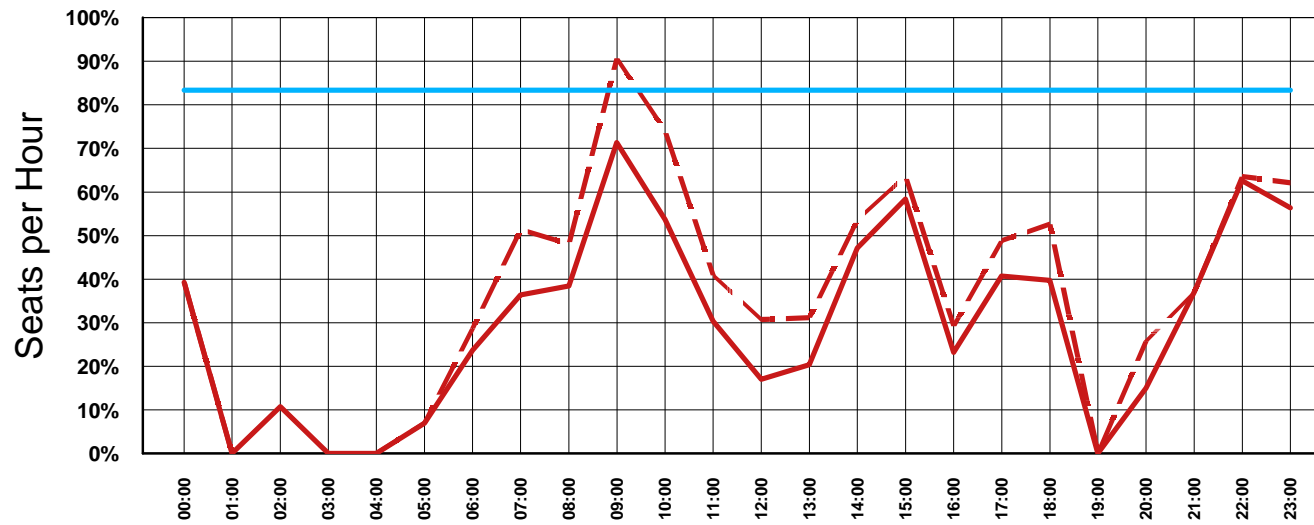
— Avg Week - - Max Week — Close to Full



MELBOURNE INTERNATIONAL TERMINAL

Weekly Departure Seat Capacity Utilisation

S09 April - October 2009 (August Week)



Updated: November 2009

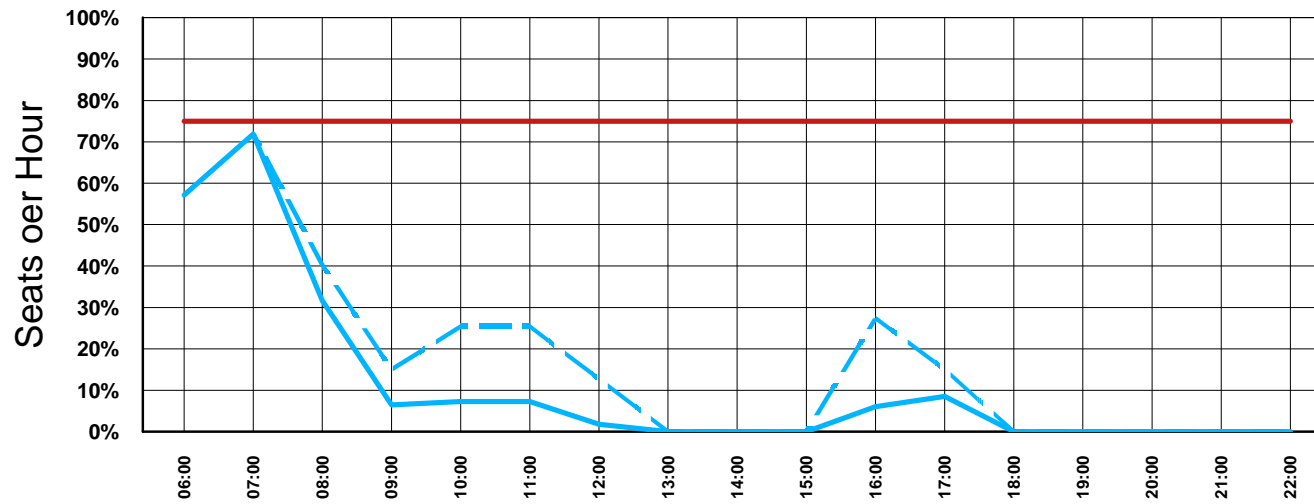
— Avg Week - - Max Week — Close to Full



GOLDCOAST INTERNATIONAL TERMINAL

Weekly Arrival Seat Capacity Utilisation

S10 April - October 2010 m(August Week)



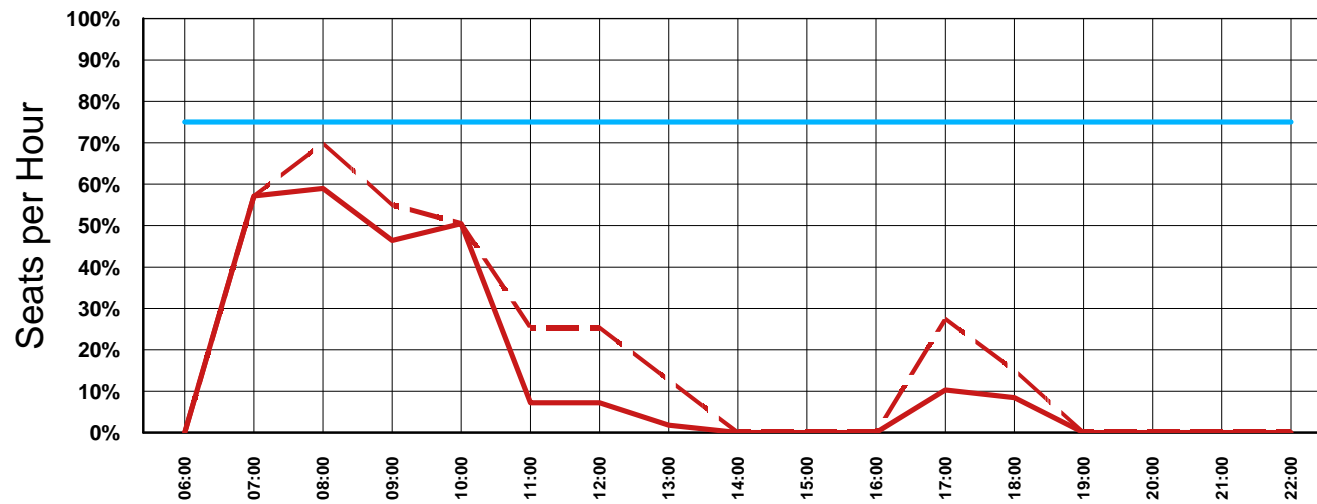
Curfew 23:00 - 06:05
 Updated: November 2009

— Avg Week - - Max Week — Close to Full



GOLDCOAST INTERNATIONAL TERMINAL

Weekly Departure Seat Capacity Utilisation S10 April - October 2010 (August Week)



Curfew 23:00 - 06:05
Updated: November 2009

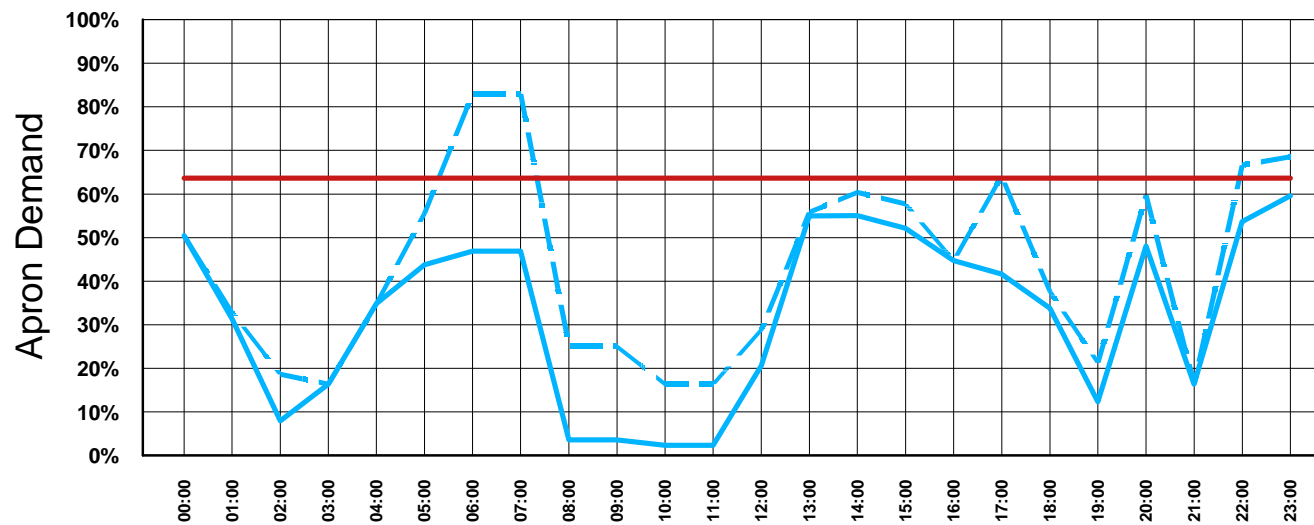
— Avg Week - - - Max Week — Close to Full



PERTH INTERNATIONAL TERMINAL

Weekly Arrival Seat Capacity Utilisation

S10 April - October 2010 (August Week)



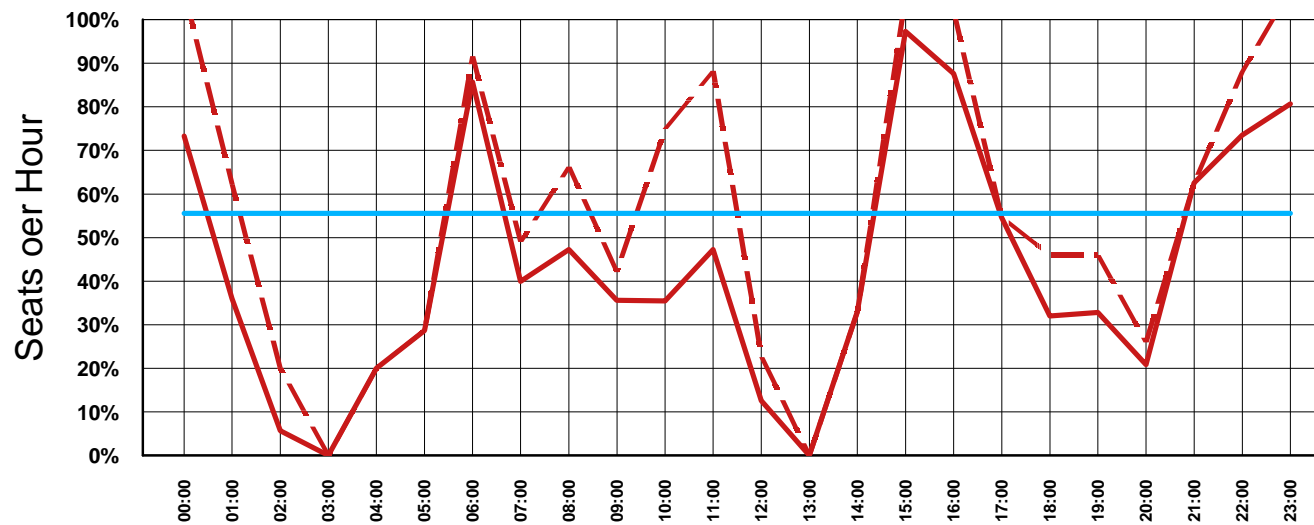
Updated: November 2009

— Avg Week - - - Max Week — Close to Full



PERTH INTERNATIONAL TERMINAL

Weekly Departure Seat Capacity Utilisation S10 April - October 2010 (August Week)



Updated: November 2009

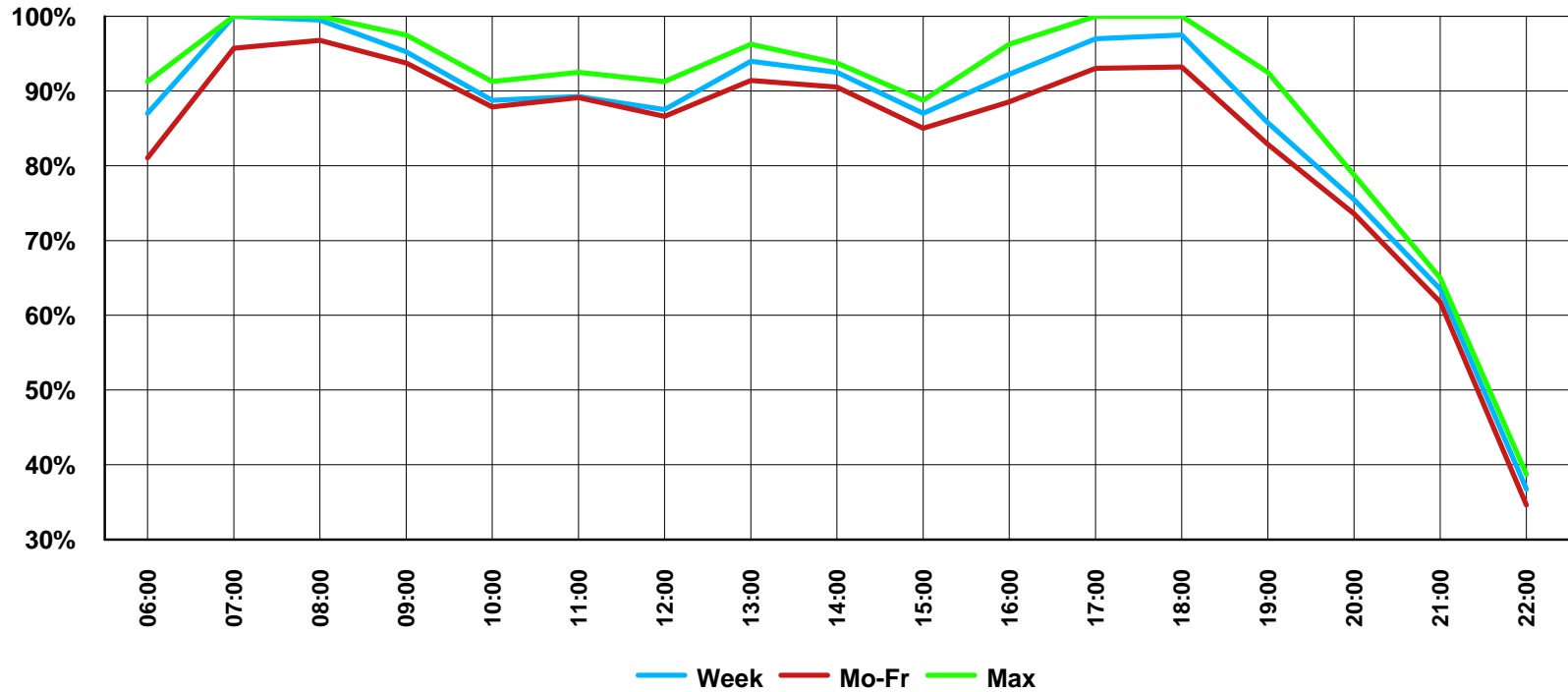
— Avg Week - - Max Week — Close to Full



SYDNEY INTERNATIONAL AIRPORT

Weekly Runway Slot Utilisation

Sample Week - S10 (April - October 2010)



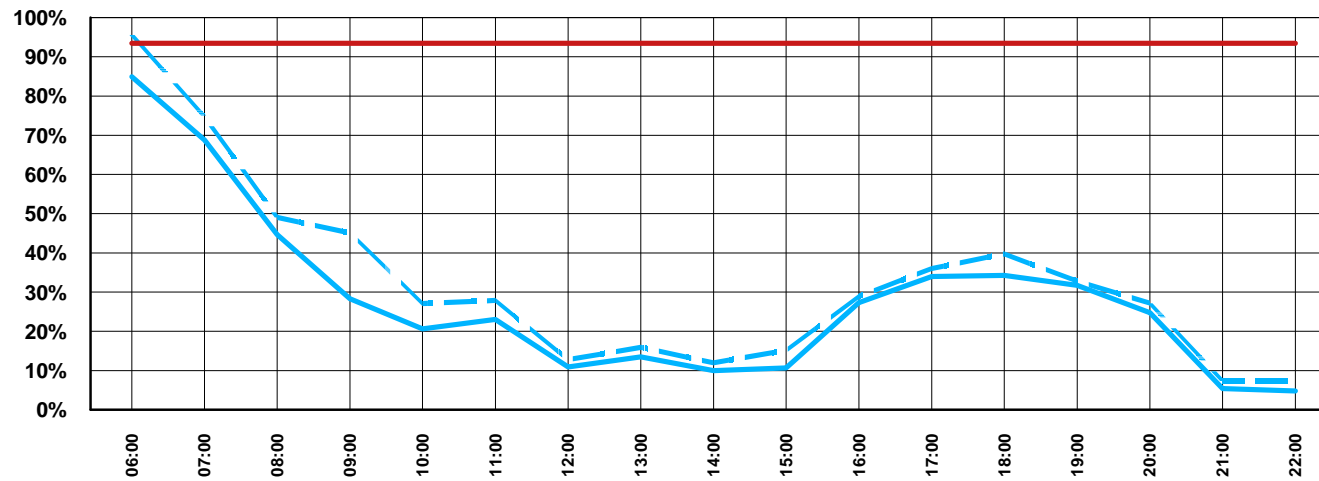
As at November 2009



SYDNEY INTERNATIONAL TERMINAL

Weekly Arrival Seat Capacity Utilisation

S10 April - October 2010 (August Week)



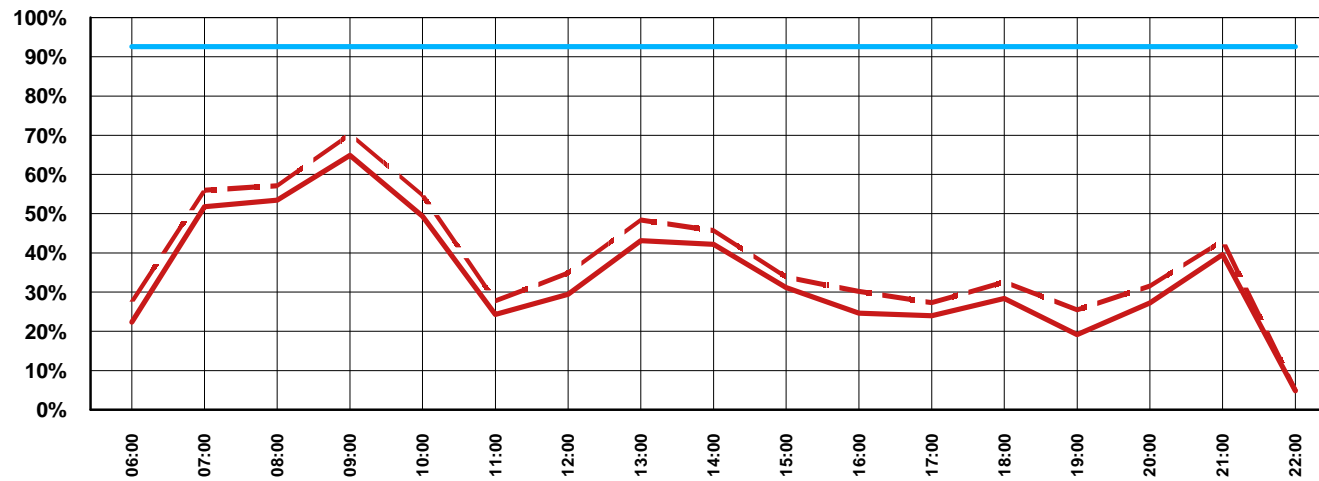
Curfew 23:00 - 06:05
 check for other limitations
 Updated: November 2009

— Avg Week - - - Max Day(s) — Close to Full



SYDNEY INTERNATIONAL TERMINAL

Weekly Departure Seat Capacity Utilisation S10 April - October 2010 (August Week)



Curfew 23:00 - 06:05
check for other limitations
Updated: November 2009

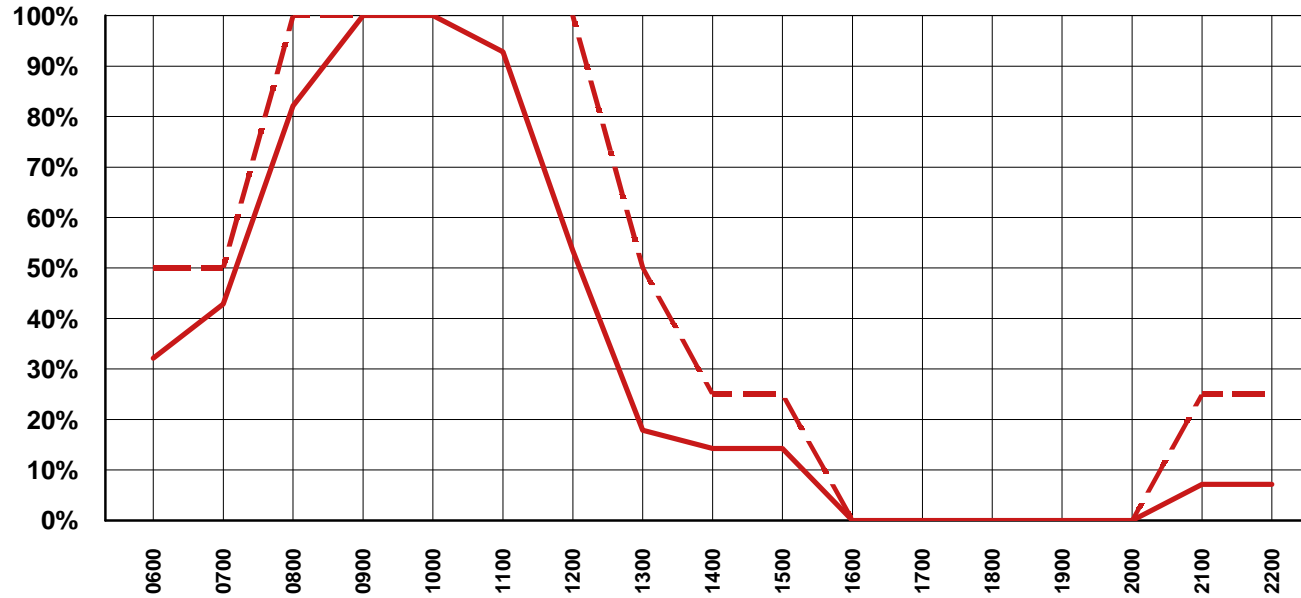
— Avg Week - - - Max Day(s) — Close to Full



ADELAIDE INTERNATIONAL TERMINAL

Weekly Apron Capacity Utilisation

S10 April - October 2010 (August Sample Week)



Updated: November 2009

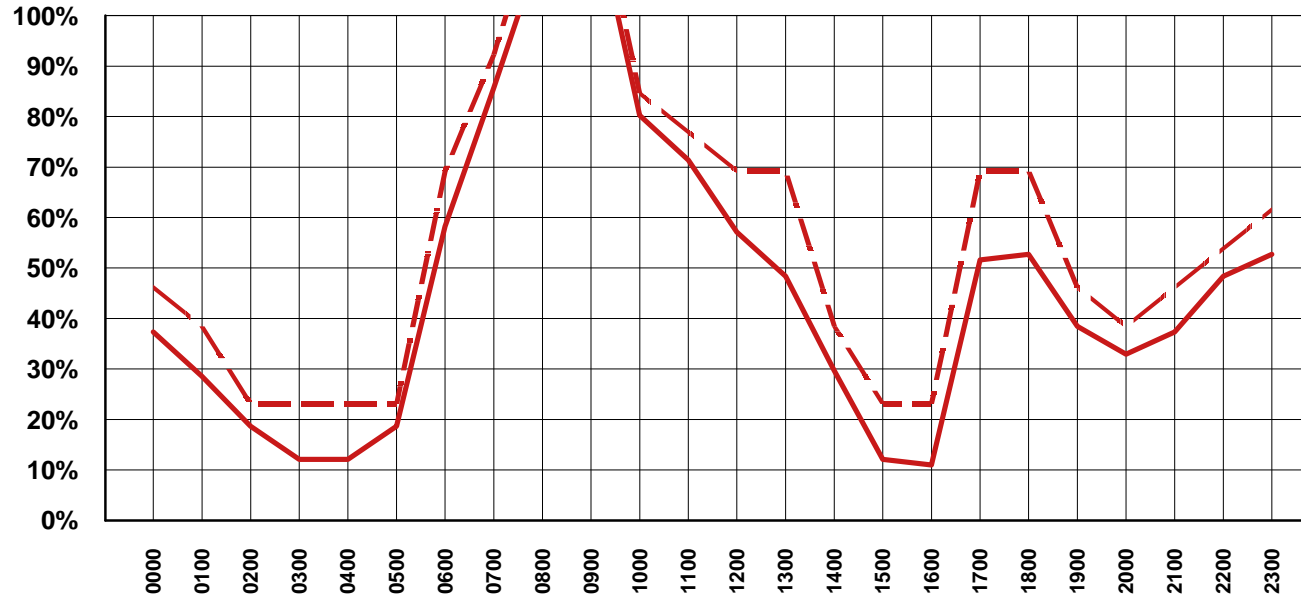
— Avg Week - - - Max Day



BRISBANE INTERNATIONAL TERMINAL

Weekly Apron Capacity Utilisation

S10 April - October 2010 (August Sample Week)



Updated: November 2009

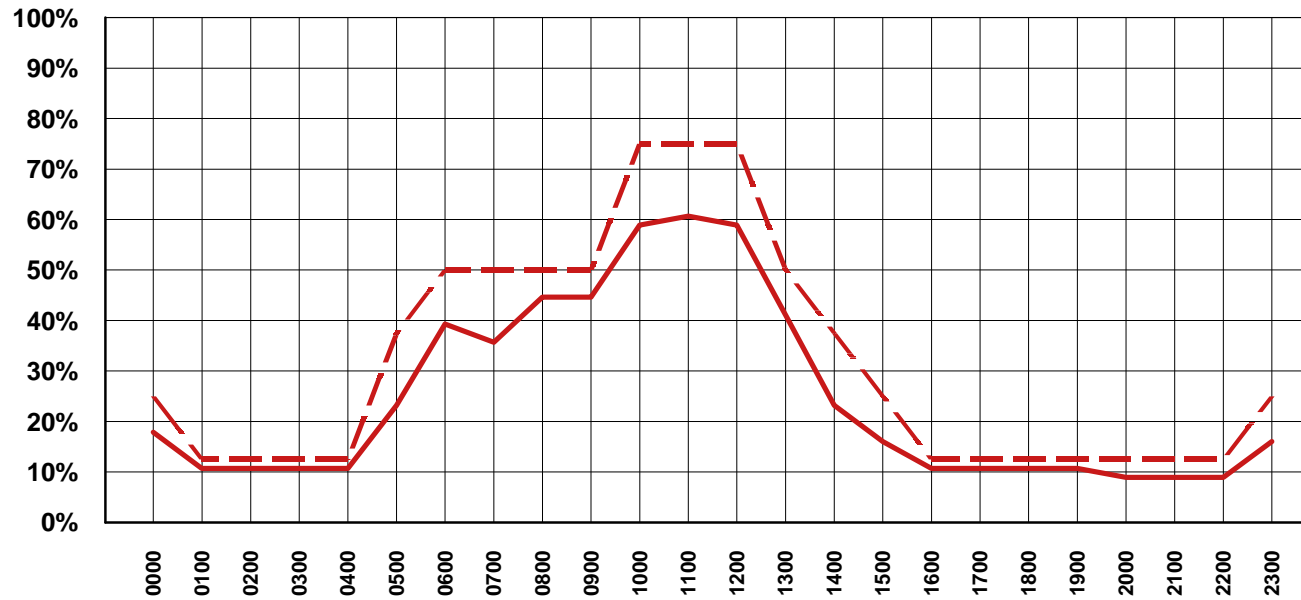
— Avg Week - - - Max Day



CAIRNS INTERNATIONAL TERMINAL

Weekly Apron Capacity Utilisation

S10 April - October 2010 (August Sample Week)



Updated: November 2009

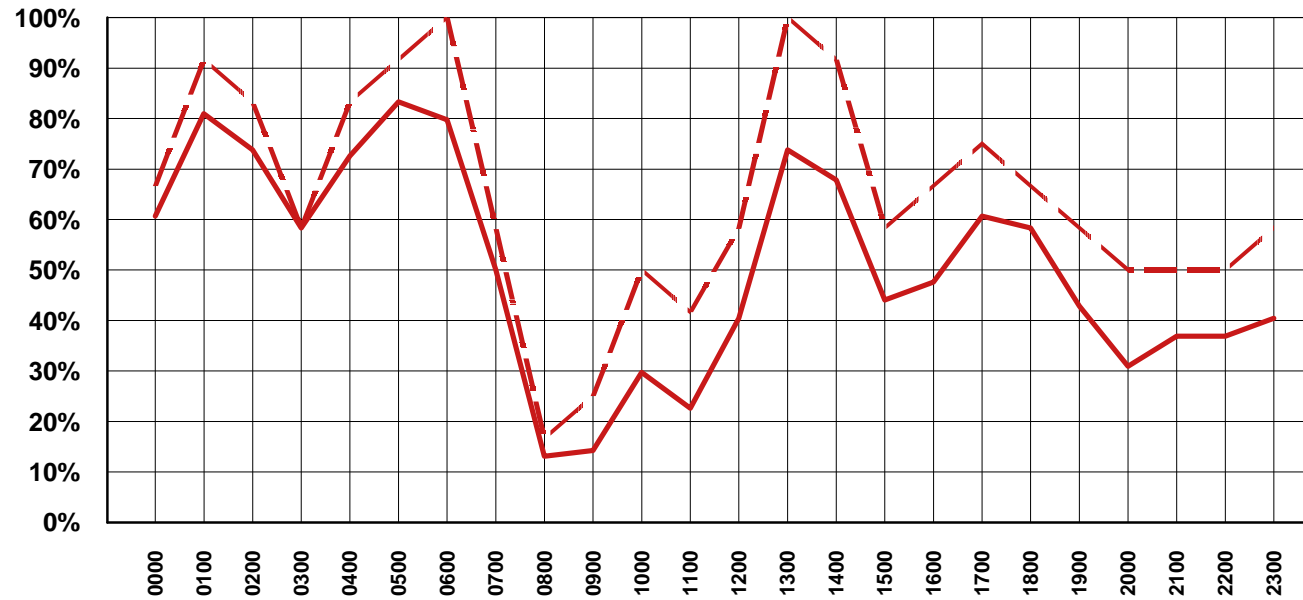
— Avg Week - - - Max Day



DARWIN INTERNATIONAL TERMINAL

Weekly Apron Capacity Utilisation

S10 April - October 2010 (August Sample Week)



Updated: November 2009

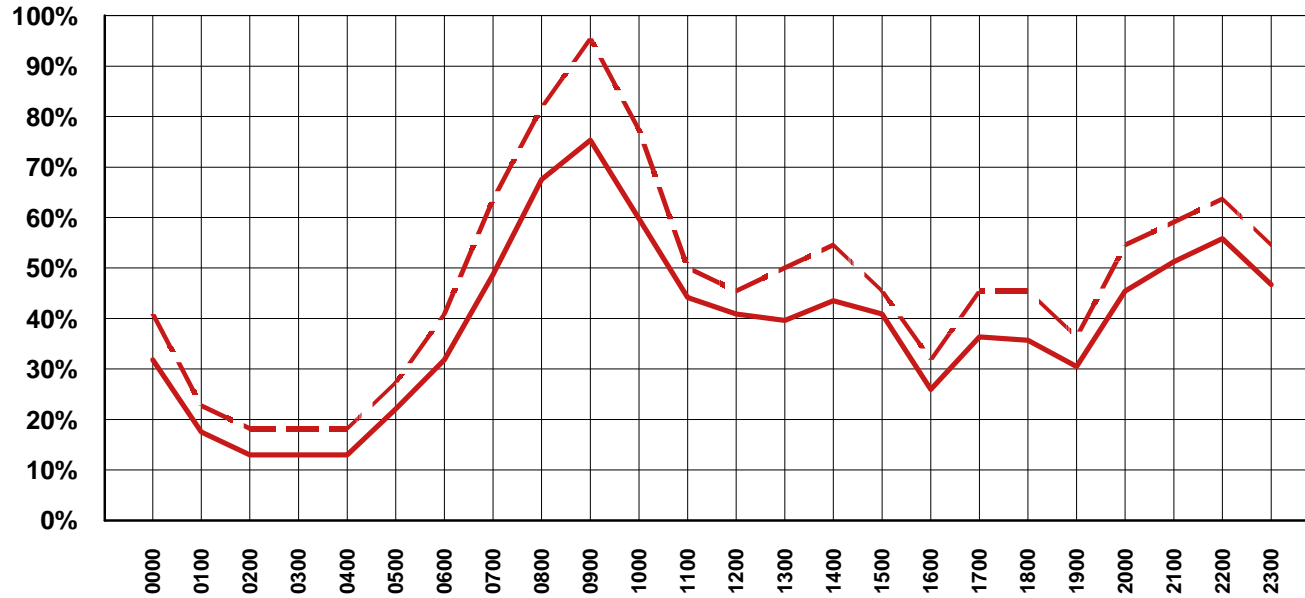
— Avg Week - - - Max Day



MELBOURNE INTERNATIONAL TERMINAL

Weekly Apron Capacity Utilisation

S10 April - October 2010 (August Sample Week)



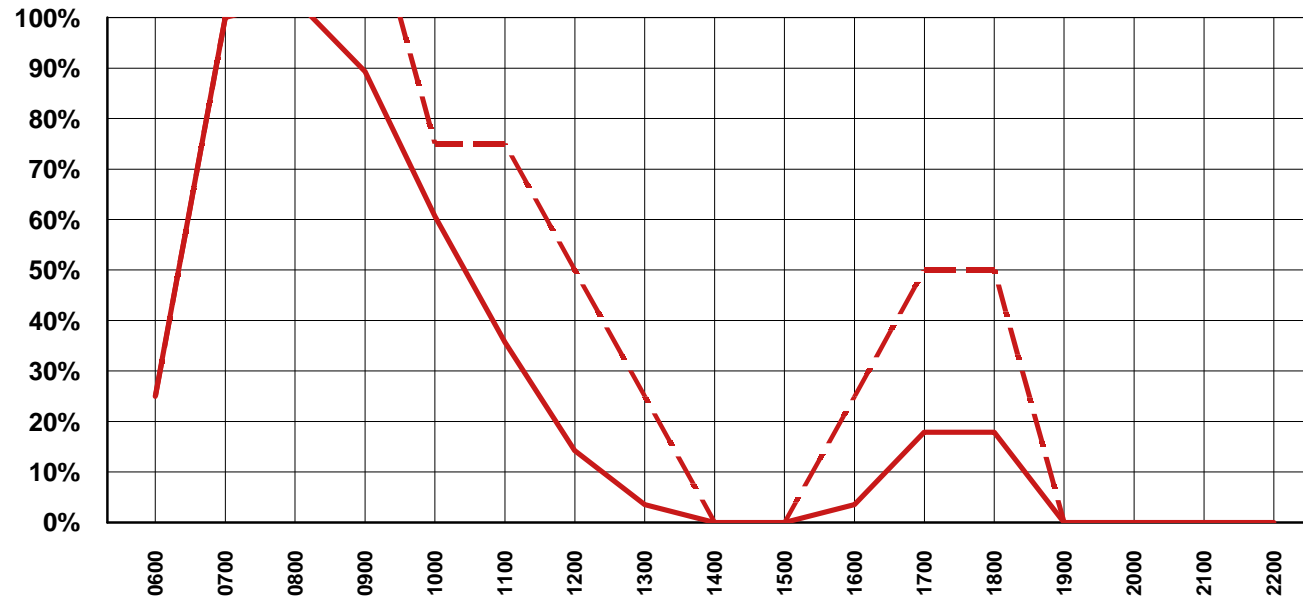
Updated: November 2009

— Avg Week - - - Max Day



GOLDCOAST INTERNATIONAL TERMINAL

Weekly Apron Capacity Utilisation
S10 April - October 2010 (August Sample Week)



Updated: November 2009

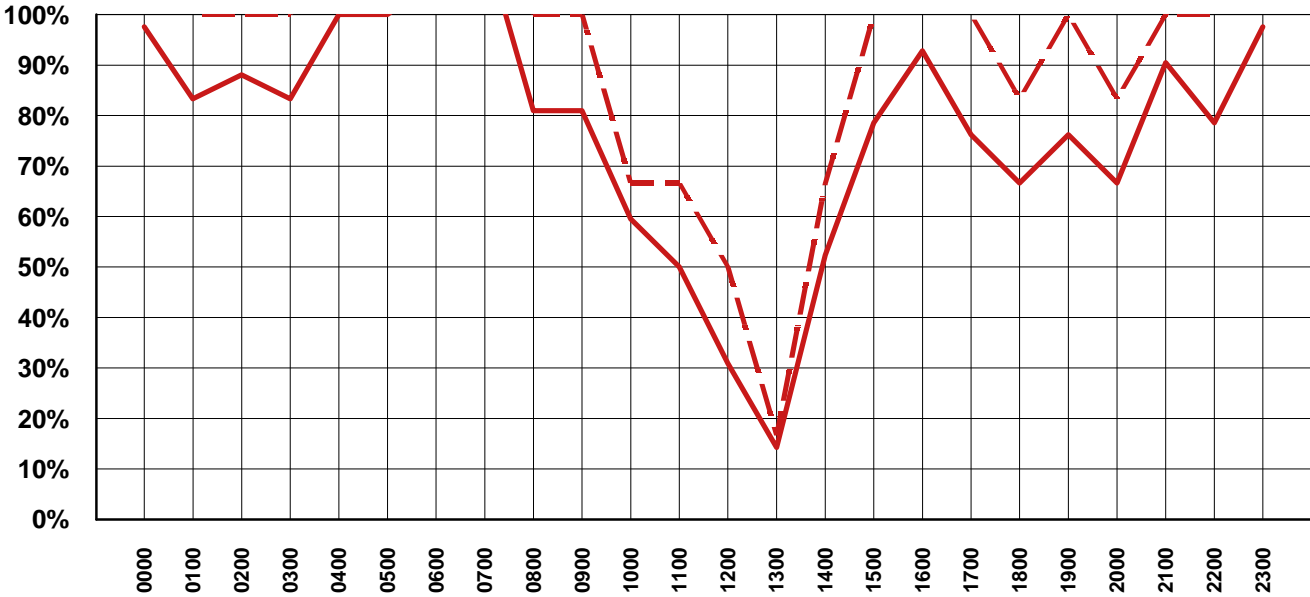
— Avg Week - - - Max Day



PERTH INTERNATIONAL TERMINAL

Weekly Apron Capacity Utilisation

S10 April - October 2010 (August Sample Week)



Updated: November 2009

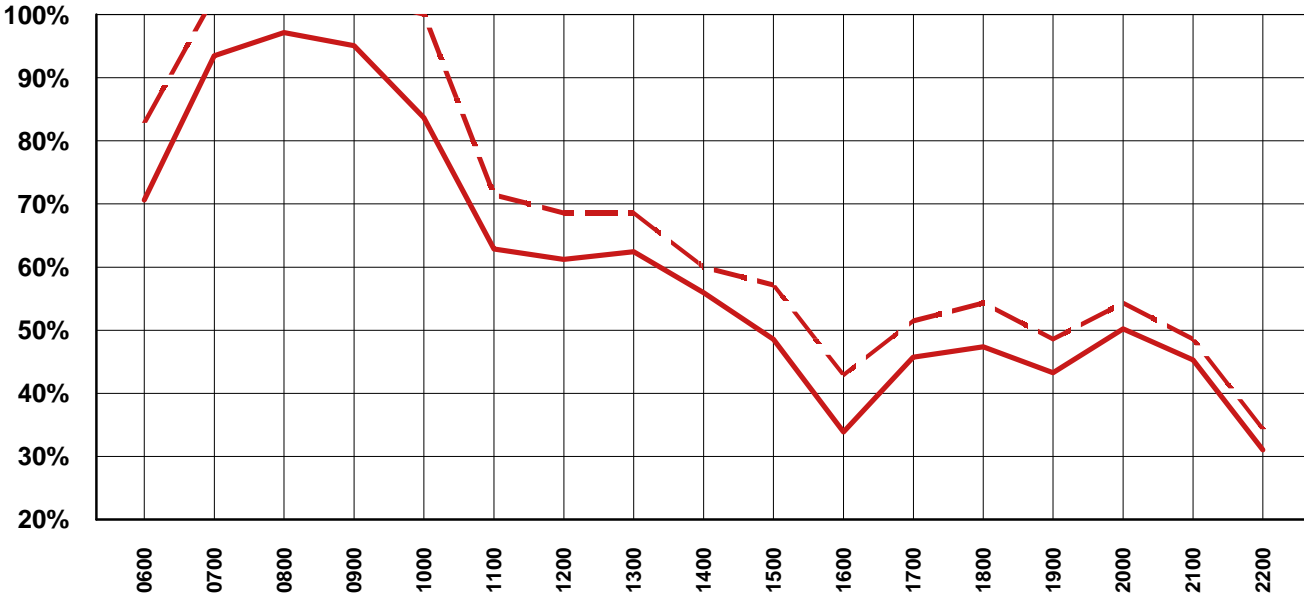
— Avg Week - - - Max Day



SYDNEY INTERNATIONAL TERMINAL (T1)

Weekly Apron Capacity Utilisation

S10 April - October 2010 (August Sample Week)



Updated: November 2009

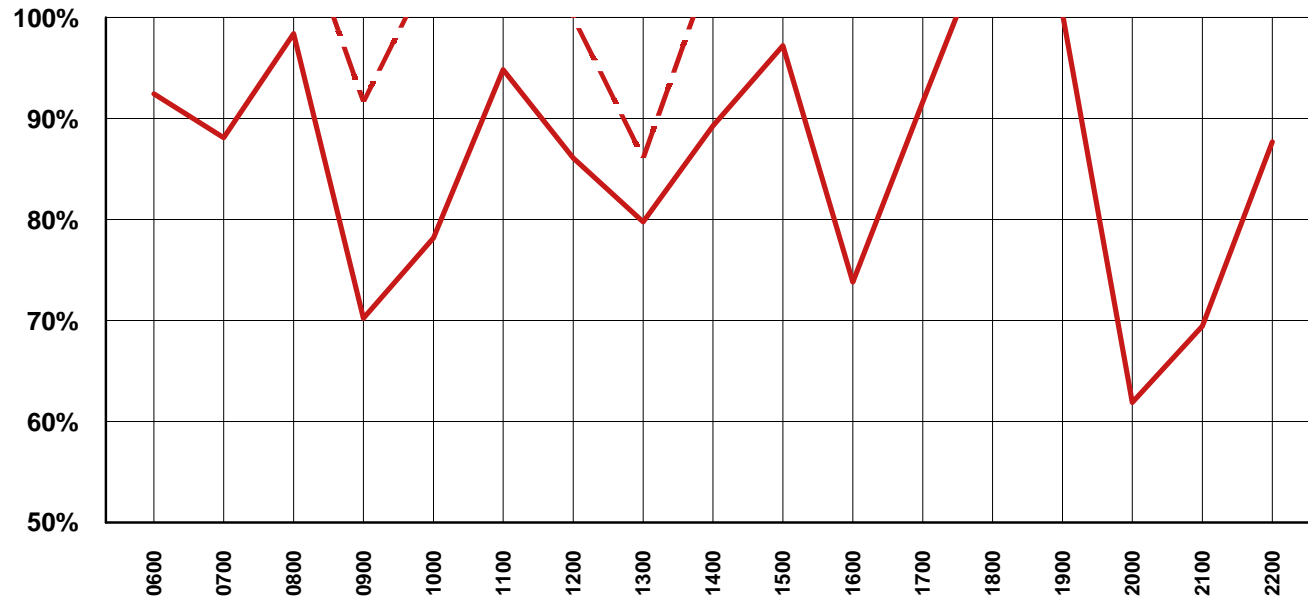
— Avg Week - - Max Day



SYDNEY AIRPORT - COMMON USER TERMINAL (T2)

Weekly Apron Capacity Utilisation

S10 April - October 2010 (August Sample Week)



Updated: November 2009

— Avg Week - - - Max Day

